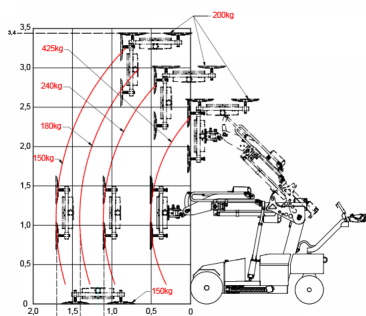
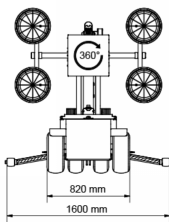
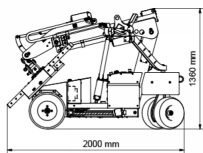


## 425kg Capacity Glassworker 425 Glazing Robot ( Model: T.GR.GW425 )



The Glassworker GW425 is very agile, perfect for use on construction sites and indoors. With a carrying capacity of up to 425 kg and its slim design, it fits through narrow doorways.

- Max. load 425 kg
- Silicone-free suction plates (no marks)
- Electric extension
- Additional manual extension Highlifter
- Vertical mounting up to 3.0 m
- Overhead mounting up to 3.40 m
- Cable remote control
- Self-monitoring safety system
- Plug & Play delivery
- Overload key
- 4 suction plates 350 mm
- Manual rotation
- Manual swivel
- Battery 2 x 90 Ah
- Front-wheel drive 1.2 kW
- Operating instructions with CE declaration of conformity
- Own weight approx. 680 kg
- Radio remote control optional
- Angle correction optional

### Attributes:

**Product Code:** T.GR.GW425

**Unit Of Sale:** Each

