

Flat Head Articulated Bolt For 22 - 26mm Insulated Glass Uni (Model: KSP.R1039-2226-1465)

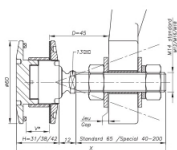


Attributes:

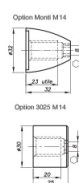
Product Code: KSP.R1039-2226-1465

Unit Of Sale: Each

Dimensions

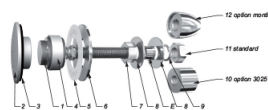


H = Setel body corresponding to the thickness of the glass.
H+1 = Glass thickness



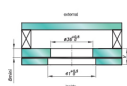
Option Mordil M14
Option 3025 M14

Components



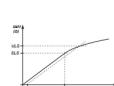
MARK	QUANTITY	DESCRIPTION	REFERENCE
1	1	Setel body	XG O N Ma 17-12.2 as per EN 10088-3
2	1	Bolt	ACU/MAGB / 20176 (MAGB) as per EN 579-9
3	1	Contact washer	ETDA
4	1	Glass hole preformed	AW 1000A as per EN 579-3 / AW 96-5/N
5	1	Contact washer	With copper/br/ with copper/br
6	1	Glass hole Ø180	XG O N Ma 17-12.2 as per EN 10088-3
7	1	Flat EN 254	As
8	2	Washer	As
9	1	Washer EN 127	As
10	1	3025 Cap-nut - Option	XG O N Ma 17-12.2 as per EN 10088-3
11	1	Nut EN 254	As
12	1	Mordil cap-nut - Option	XG O N Ma 17-12.2 as per EN 10088-3

Size Chart



It is required to provide the following information with each request (regardless of the quantity):
1. Glass thickness (H) - the length and diameter of the threaded part (H+1, H+2, H+3) (the thickness of the glass to be used to request, the thickness of the glass to be used to request the glass).

Mechanical Performance



Reference	Reference	Reference
1000A	1000A	1000A
1000B	1000B	1000B
1000C	1000C	1000C
1000D	1000D	1000D
1000E	1000E	1000E
1000F	1000F	1000F
1000G	1000G	1000G
1000H	1000H	1000H
1000I	1000I	1000I
1000J	1000J	1000J
1000K	1000K	1000K
1000L	1000L	1000L
1000M	1000M	1000M
1000N	1000N	1000N
1000O	1000O	1000O
1000P	1000P	1000P
1000Q	1000Q	1000Q
1000R	1000R	1000R
1000S	1000S	1000S
1000T	1000T	1000T
1000U	1000U	1000U
1000V	1000V	1000V
1000W	1000W	1000W
1000X	1000X	1000X
1000Y	1000Y	1000Y
1000Z	1000Z	1000Z