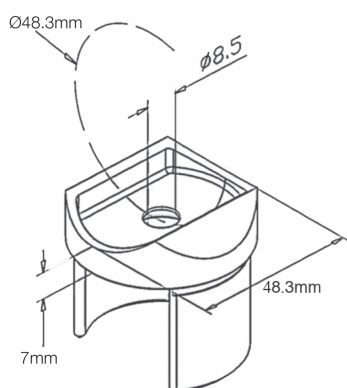


Slotted Handrail to 48.3mm x 1.5mm Tube Adapter ( Model: KSS.1503.483.316 )



- A preformed slotted handrail to tube connector, supplied in 316 grade stainless steel and a 320 grit fine brushed polish.
- Simply mounted to the post by means of a bolt and mounted to the slotted handrail by means of the stainless steel adhesive.
- No polishing or welding needed.

Attributes:

**Product Code:** KSS.1503.483.316

**Unit Of Sale:** Each