

Wall Mount Shower Hinge - Polished Chrome ( Model: JGX992.1PC )



• TO BE DISCONTINUED - LOW STOCK -  
CHECK BEFORE ORDERING. ALTERNATIVE:  
SEE SHANNON RANGE

• Glass Thickness: 10mm or 12mm tempered  
safety glass.

• Max. Door Weight: Using 2 hinges for 37kg,  
3 hinges for 55kg.

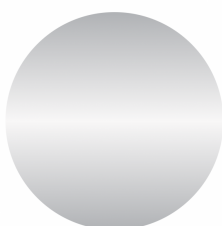
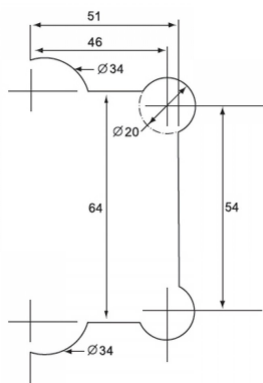
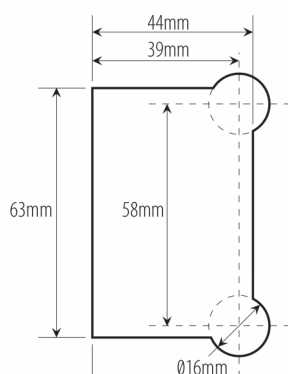
• Max. Door Width: 2 hinges for 800mm, 3  
hinges for 900mm.

• Complete with gaskets, stainless steel screws  
& wall plugs.

Attributes:

**Product Code:** JGX992.1PC

**Unit Of Sale:** 1 Hinge



POLISHED CHROME FINISH