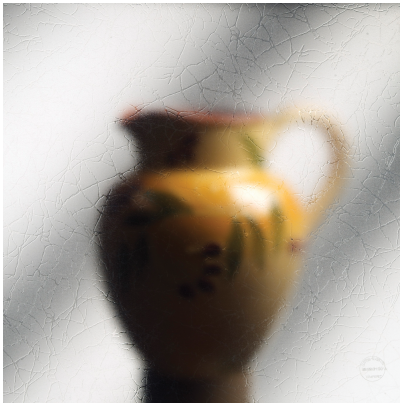


Colarado Etched [E] (Model: QSF759)



- Stained Glass Art Films are printed or embossed onto high quality polyester base materials using UV stable inks and are easy to apply to glass, plastic and other materials.
- They can even be applied to curved surfaces and are guaranteed not to fade, crack or delaminate.
- The Stained Glass Art Film palette contains a vast selection of colours and textures to appeal to most tastes, and suit all applications, from traditional to contemporary.
- Applications include domestic and commercial windows, doors, ceilings; mirrors, furniture and cabinets, and obscurity levels vary from transparent to opaque, for areas where privacy is required such as bathroom windows.
- Screen images may appear different from the actual film.

Attributes:

Product Code: QSF759

Unit Of Sale: EACH
