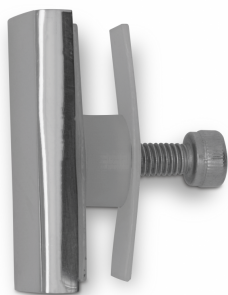


Cascade Rail To Glass Panel End Fixing - SSS ( Model: J.CAS013 )



- This fitting can be added to the Cascade shower door system on one or both ends to convert the system from a wall to wall system into a wall to glass or a glass to glass system.

- A simple drilled hole in the end fixed panel is all that is required.

Attributes:

**Product Code:** J.CAS013

**Unit Of Sale:** Each

---