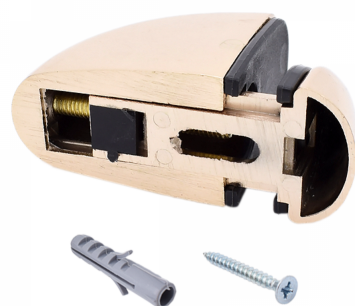


Mini Shelf Grip Brass (Model: H0208)



- Mini Shelf Grip Brass is suitable for material from 3mm up to a maximum of 24mm.
- Distance between both shelf grips should not exceed 300mm.
- Maximum shelf depth of 200mm.
- Maximum load weight on brackets should not exceed 20kg.

Attributes:

Product Code: H0208

Unit Of Sale: Pair

