



Glass Balustrading Systems & Fittings

Product Catalogue

Edition 1 · 2017

This publication is copyright protected. All rights reserved. The use of texts and images, even in part, without the express written permission of Moneygall Glazing Accessories Ltd, is a copyright violation and may be liable to prosecution.

All information in this publication was checked with the greatest care. Moneygall Glazing Accessories Ltd, do not assume any liability for possible damage or expense occurring in connection with the content of this catalogue. All liabilities for any possible typographical error or mistakes are excluded. We reserve the right to make continuous modifications without notification.

Copyright © Moneygall Glazing Accessories Ltd.

	Republic of Ireland (Head Office)	United Kingdom (Sales Office)
Phone:	0505 45125	0800 975 3436
Fax:	0505 45345	00 353 505 45345
Web:	www.glassparts.ie	www.glassparts.co.uk
Email:	sales@glassparts.ie	sales@glassparts.co.uk
Address:	Lisbunny Industrial Estate, Lisbunny, Nenagh, Co. Tipperary.	Kemp House, 152 City Road, London. EC1V 2NX



GlassParts is a trading name in the Republic of Ireland and the United Kingdom for Moneygall Glazing Accessories Ltd, a registered company in the Republic of Ireland. Company registration number 133874.

Chapter	Page
Crystal View System.....	04 - 11
Mega Grip System.....	12 - 16
Spig-Lite Pro System.....	17 - 20
On Level 1.5kN.....	21 - 27
On Level 3.0kN.....	28 - 36
Panel Supports.....	37 - 39
Kwixset Expanding Cement.....	40
Glass Clamps.....	41 - 51
Point Fixtures.....	52 - 56
Pre Manufactured Balustrade Posts.....	57 - 60
Eazi-rail SS System.....	61 - 68
Slotted Stainless Steel Handrail.....	69 - 70
Slotted Rail Juliette Balcony Systems.....	71
Point Fixed Juliette Balcony Systems.....	72
Glass Gate Systems.....	73 - 74

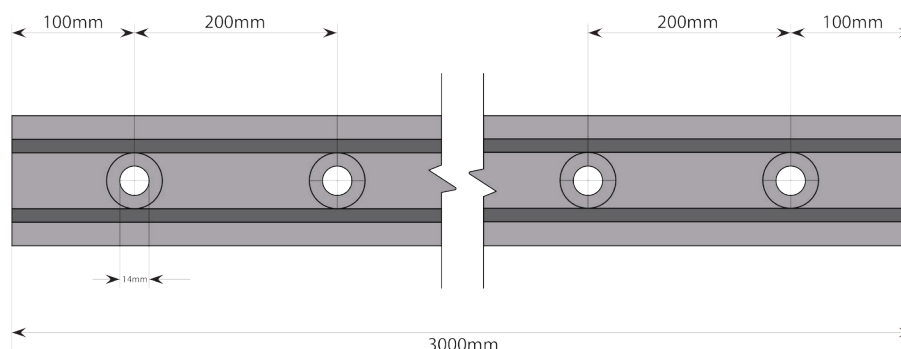
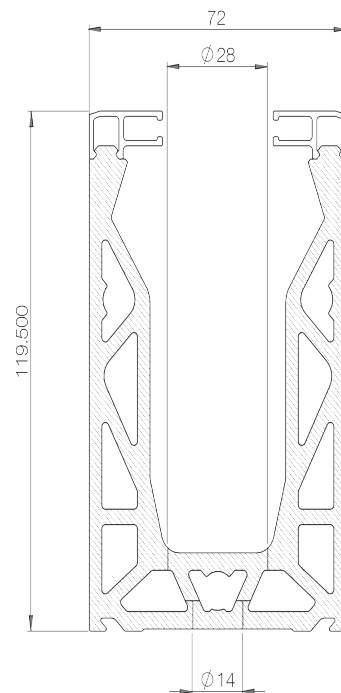
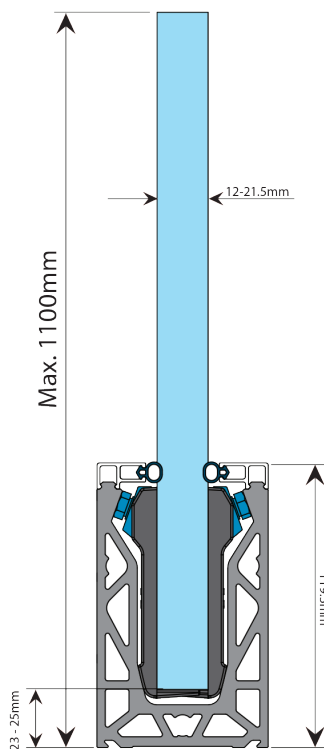
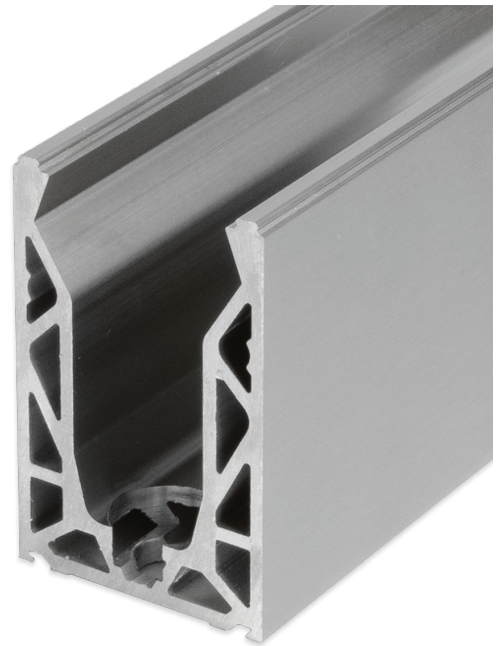


Crystal View

Frameless Balustrade System For
Domestic & Commercial Use Up To 1.5kN

Crystal View Surface Mounted

- Fast Installation**
 Designed to be installed without the need of ensuring the fitting surface is totally level.
- Fully Adjustable after Installation**
 Crystal View uses a unique, simple adjustment system allowing horizontal alignment of each glass panel.
- Light Weight and Extremely Strong**
 Cleverly designed out of extruded aluminium, saving weight yet keeping strength. For added protection we have our channel anodised to 20 micron, making it suitable for use even in seaside locations.
- Excellently Engineered**
 Crystal View is tested & engineered to meet the strictest building regulations (with the appropriate fixing and glass thickness) in both domestic and commercial installations. It can be installed in a wide variety of applications and is tested in accordance with BS6180. Full test reports available upon request.



3 Metre Surface Mounted Kit



Complete 3 Metres of surface mounted Crystal View System, which includes:

- 3 metres of base channel
- 6 metres of gasket
- 2 x 3 metres of top seal
- 24 clamp bars & bolts
- 12 glass clamps suitable for your glass thickness

No need for additional cladding as the profile is supplied in a stainless steel like finish.

Suitable for 12mm to 21.5mm thick glass and up to 1100mm high. Supplied in 3 metre lengths.

Fixings to structure not included ~ Endcaps, dowels and spanners sold separately

Description	Code	Unit of Sale
Crystal View 3 Metre Surface Mounted Kit for 12mm Glass	KCVSUKIT.012	3 Metre
Crystal View 3 Metre Surface Mounted Kit for 13.5mm Glass	KCVSUKIT.013	3 Metre
Crystal View 3 Metre Surface Mounted Kit for 15mm Glass	KCVSUKIT.015	3 Metre
Crystal View 3 Metre Surface Mounted Kit for 17.5mm Glass	KCVSUKIT.017	3 Metre
Crystal View 3 Metre Surface Mounted Kit for 19mm Glass	KCVSUKIT.019	3 Metre
Crystal View 3 Metre Surface Mounted Kit for 21.5mm Glass	KCVSUKIT.021	3 Metre

Glass Clamp Kit with Gasket



Complete Glass Clamp kit, includes:

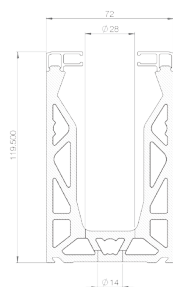
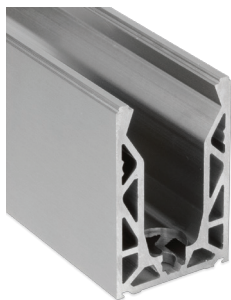
- 12 Glass Clamps
- 24 Clamp Bars
- 24 Clamp Bolts
- 6 Metre Gasket

Clamp kits have enough components to suit a 3 metre length of channel.

The clamps can fit glass thicknesses 1mm either way of said glass thickness i.e. 15mm glass clamps will suit 14mm to 16mm glass.

Included are the clamp bars, which sit into the top mould of the clamps and the clamp bolts, which screw into the bars and are then undone to hold the glass in place. These are undone and tightened each side allowing the glass to be aligned. 6 metres of gasket to suit your glass thickness is also included.

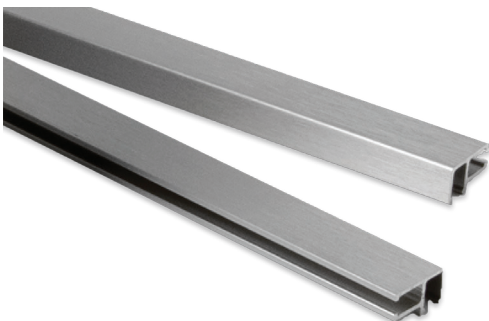
Description	Code	Unit of Sale
Crystal View 12mm Glass Clamp Kit with Gasket	KCV012	Kit
Crystal View 13.5mm Glass Clamp Kit with Gasket	KCV013	Kit
Crystal View 15mm Glass Clamp Kit with Gasket	KCV015	Kit
Crystal View 17.5mm Glass Clamp Kit with Gasket	KCV017	Kit
Crystal View 19mm Glass Clamp Kit with Gasket	KCV019	Kit
Crystal View 21.5mm Glass Clamp Kit with Gasket	KCV021	Kit



Bottom Drilled Channel

This is the main section that holds the glass. It is pre-drilled at 100mm from the ends and then 200mm thereafter. The hole is to suit a 12mm fixing bolt and is counter bored to sink the bolt head.

Description	Code	Unit of Sale
Bottom Drilled Channel	KCV002	3 Metre



Top Trim

The top trim holds the gasket and is pressed onto the channel at the end of the installation. It covers the clamps from view and prevents debris from entering the channel.

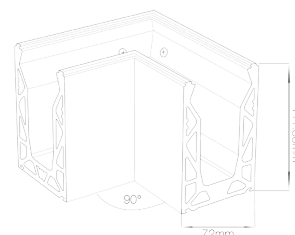
Description	Code	Unit of Sale
Top Trim	KCV003	3 Metre



Top Seal Gasket

Additional gasket can be supplied in any length. There are two types that cover all the glass thicknesses catered for. The small gasket suits 19mm to 21.5mm glass and the large gasket suits 12mm to 17mm glass.

Description	Code	Unit of Sale
Top Seal Gasket 12 - 17mm Glass	KCV035	Metre
Top Seal Gasket 19 - 21.5mm Glass	KCV036	Metre



90° Corner

A prefabricated 90 degree corner supplied to reduce the amount of cutting needed on sites. On a standard balcony with 90 degree corners the installer only needs to make straight cuts.

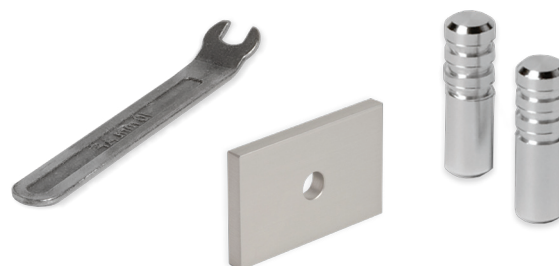
Description	Code	Unit of Sale
90 Degree Corner	KCV090	3 Metre



End Caps

Stainless steel end caps cut to suit the surface mounted channel. An adhesive will be needed to hold the standard end cap in place, while the end cap with the dowels can just be tapped into place.

Description	Code	Unit of Sale
End Cap - No Cladding	KCV006	Each
End Cap - With Dowels	KCV006A	Each



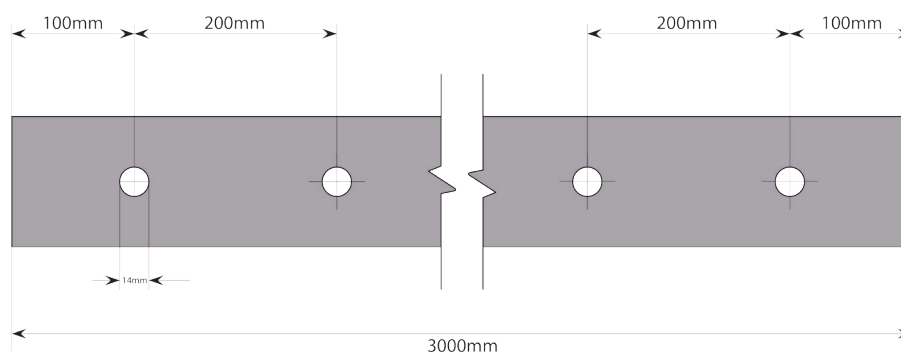
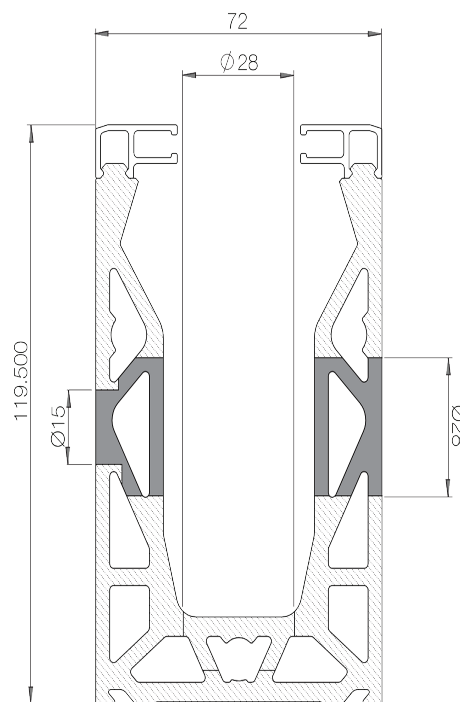
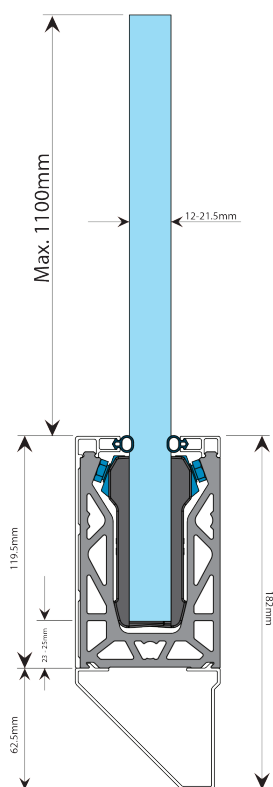
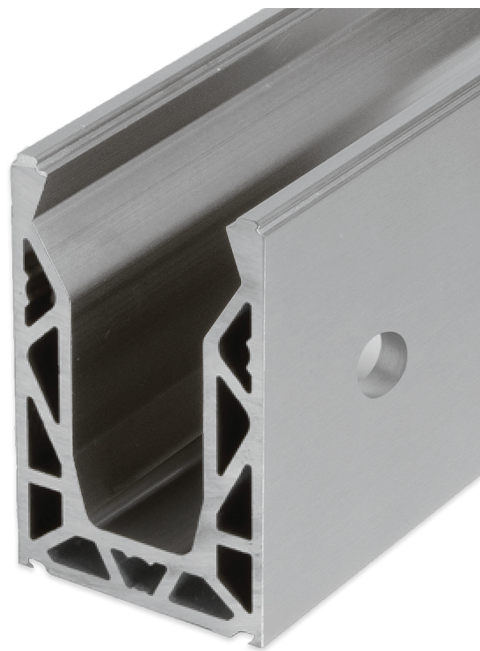
Spanner, Joining Dowels & Drainage Block

Spanner - Angled to reach the clamp bolts to tighten/loosen the glass.
Dowels - Used to allow for better aligning when joining channel sections.
Drainage Blocks - are installed between the channel and the substrate to allow free flow of water to drain out of the system.

Description	Code	Unit of Sale
10mm Adjustment Spanner	KCV008	Each
Joining Dowels	KCV009	Each
Drainage Block	KCV010	Each

Crystal View Side Mounted

- Fast Installation**
 Designed to be installed without the need of ensuring the fitting surface is totally level.
- Fully Adjustable after Installation**
 Crystal View uses a unique, simple adjustment system allowing horizontal alignment of each glass panel.
- Light Weight and Extremely Strong**
 Cleverly designed out of extruded aluminium, saving weight yet keeping strength. For added protection we have our channel anodised to 20 micron, making it suitable for use even in seaside locations.
- Excellently Engineered**
 Crystal View is tested & engineered to meet the strictest building regulations (with the appropriate fixing and glass thickness) in both domestic and commercial installations. It can be installed in a wide variety of applications and is tested in accordance with BS6180. Full test reports available upon request.



3 Metre Side Mounted Kit



Complete 3 Metres of side mounted Crystal View System, which includes:

- 3 metres of side mount channel
- 3 metres of top seal
- 3 metres of side cladding (bottom cladding not included)
- 6 metres of gasket
- 24 clamp bars & bolts
- 12 glass clamps suitable for your glass thickness

Suitable for 12mm to 21.5mm thick glass and up to 1100mm high. Supplied in 3 metre lengths.

Fixings to structure not included ~ Endcaps, dowels, bottom cladding and spanners sold separately.

Description	Code	Unit of Sale
Crystal View 3 Metre Side Mounted Kit for 12mm Glass	KCVSIKIT.012	3 Metre
Crystal View 3 Metre Side Mounted Kit for 13.5mm Glass	KCVSIKIT.013	3 Metre
Crystal View 3 Metre Side Mounted Kit for 15mm Glass	KCVSIKIT.015	3 Metre
Crystal View 3 Metre Side Mounted Kit for 17.5mm Glass	KCVSIKIT.017	3 Metre
Crystal View 3 Metre Side Mounted Kit for 19mm Glass	KCVSIKIT.019	3 Metre
Crystal View 3 Metre Side Mounted Kit for 21.5mm Glass	KCVSIKIT.021	3 Metre

Glass Clamp Kit with Gasket



Complete Glass Clamp kit, includes:

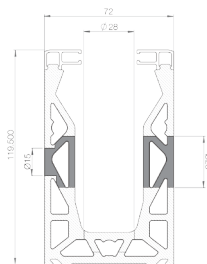
- 12 Glass Clamps
- 24 Clamp Bars
- 24 Clamp Bolts
- 6 Metre Gasket

Clamp kits have enough components to suit a 3 metre length of channel.

The clamps can fit glass thicknesses 1mm either way of said glass thickness i.e. 15mm glass clamps will suit 14mm to 16mm glass.

Included are the clamp bars, which sit into the top mould of the clamps and the clamp bolts, which screw into the bars and are then undone to hold the glass in place. These are undone and tightened each side allowing the glass to be aligned. 6 metres of gasket to suit your glass thickness is also included.

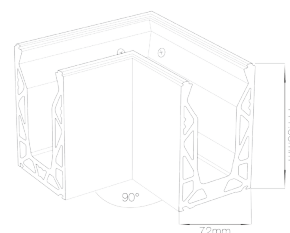
Description	Code	Unit of Sale
Crystal View 12mm Glass Clamp Kit with Gasket	KCV012	Kit
Crystal View 13.5mm Glass Clamp Kit with Gasket	KCV013	Kit
Crystal View 15mm Glass Clamp Kit with Gasket	KCV015	Kit
Crystal View 17.5mm Glass Clamp Kit with Gasket	KCV017	Kit
Crystal View 19mm Glass Clamp Kit with Gasket	KCV019	Kit
Crystal View 21.5mm Glass Clamp Kit with Gasket	KCV021	Kit



Side Drilled Channel

This is the main section that holds the glass. It is pre-drilled at 100mm from the ends and then 200mm thereafter. The hole is to suit a 12mm fixing bolt and is counter bored to sink the bolt head. Drilled through both walls to allow a socket through.

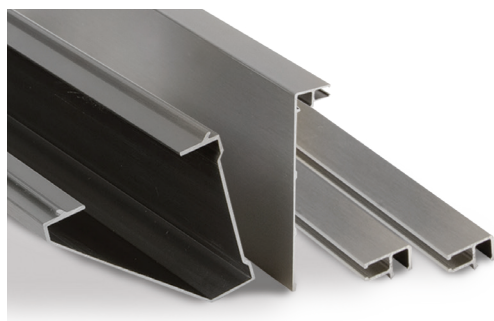
Description	Code	Unit of Sale
Side Drilled Channel	KCV001	3 Metre



90° Corner

A prefabricated 90 degree corner supplied to reduce the amount of cutting needed on sites. On a standard balcony with 90 degree corners the installer only needs to make straight cuts.

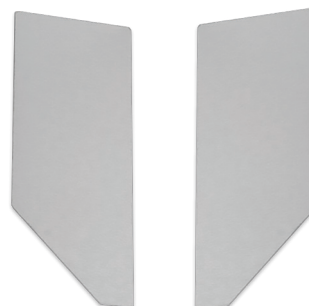
Description	Code	Unit of Sale
90 Degree Corner	KCV090	3 Metre



Bottom Cladding, Side Cladding & Top Trim

The Bottom Cladding gives an angled finish to the bottom of the channel. Both to be used with the side drilled channel to cover the drill holes from view. Each require adhesive to secure in place. The side cladding and top trim hold the gasket in place and cover the clamps from view.

Description	Code	Unit of Sale
Top Trim	KVC003	3 Metre
Side Cladding	KCV004	3 Metre
Bottom Cladding	KCV005	3 Metre



End Caps - Right & Left

Stainless steel end caps cut to suit the side mounted channel when used with the bottom cladding. An adhesive will need to be used to hold them in place. Due to the design, these are available in right and left hand models.

Description	Code	Unit of Sale
End Cap Right	KCV007R	Each
End Cap Left	KCV007L	Each



Top Seal Gasket

Additional gasket can be supplied in any length. There are two types that cover all the glass thicknesses catered for. The small gasket suits 19mm to 21.5mm glass and the large gasket suits 12mm to 17mm glass.

Description	Code	Unit of Sale
Top Seal Gasket 12 - 17mm Glass	KCV035	Metre
Top Seal Gasket 19 - 21.5mm Glass	KCV036	Metre



Adjustment Spanner & Joining Dowels

Spanner - Angled to reach the clamp bolts to tighten/loosen the glass. Dowels - Used to allow for better aligning when joining channel sections together. There are three slots in the channel to hold dowels although only two are generally used.

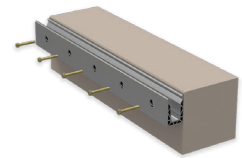
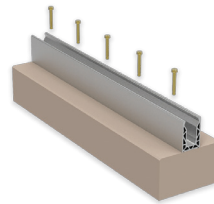
Description	Code	Unit of Sale
10mm Adjustment Spanner	KCV008	Each
Joining Dowels	KCV009	Each

Crystal View Installation Instructions

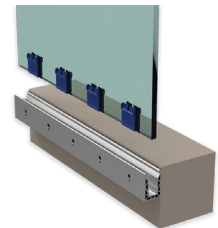
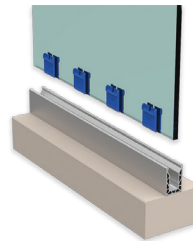
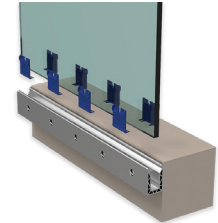
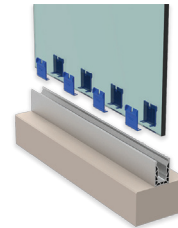
Surface Mount

Side Mount

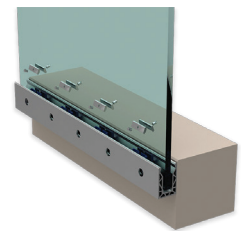
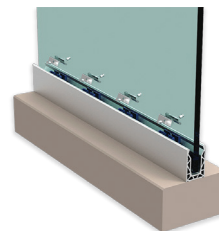
Step 1: Fit the base channel to the substrate.



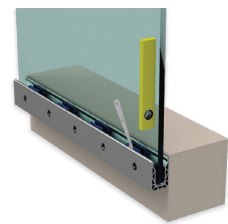
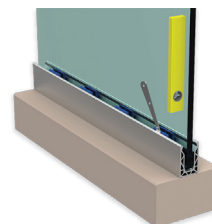
Step 2: Clip the glass clamps onto the bottom edge of the glass panel and place the glass into the already fixed channel.



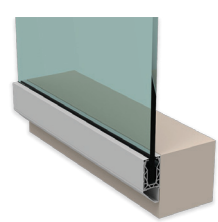
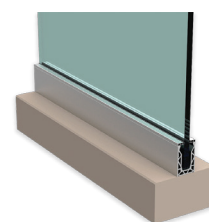
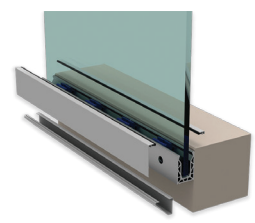
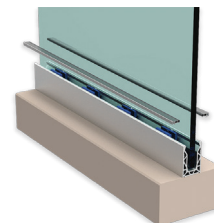
Step 3: Insert the adjustment shims and bolts into the glass clamps.



Step 4: Using the supplied spanner, open the adjustment bolts back against the channel to tighten the glass into place.



Step 5: Once the glass is fully aligned and tightened, simply attach the cover bead and gasket.



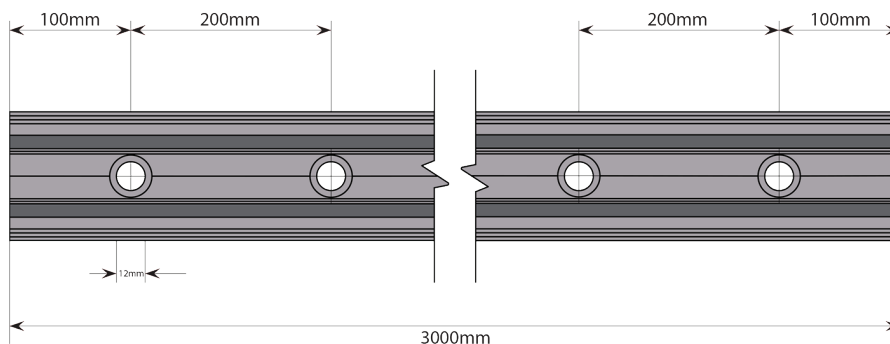
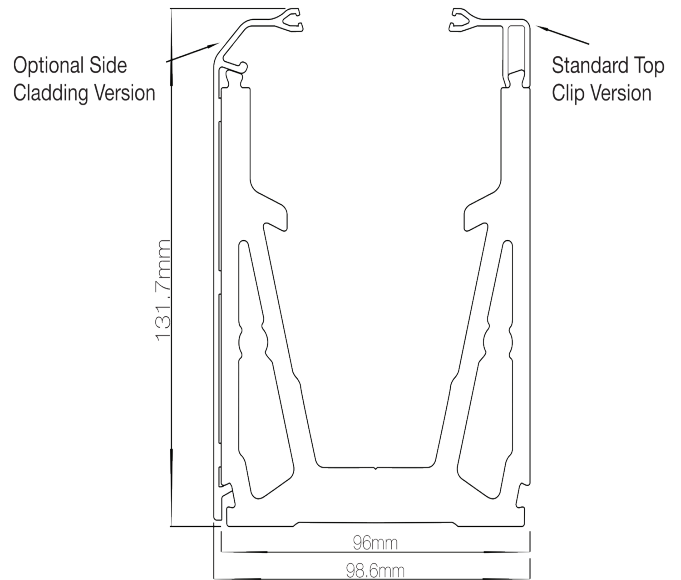
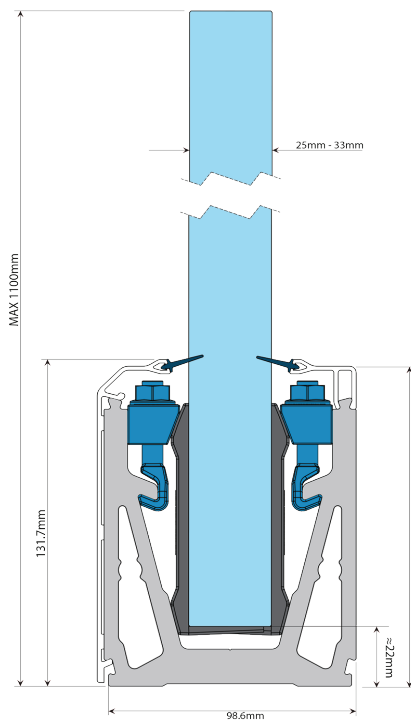


MEGA GRIP

Frameless Balustrade System For
Commercial and Public Use Up To 3kN

Mega Grip Base Channel

- 3kN Loadings**
 Starting with the slimmest glass 25mm up to 33mm all designed to withstand loadings of over 3kN with a deflection of less than 25mm.
 Tested in accordance with BS6180
- Simple to Install**
 Using our superior clamping system you can attach the clamps to the glass and simply place it in the channel. The glass is secured and adjusted using our patented hook-lock system where a torque bar is used from the top of the channel.
- Aesthetically Durable**
 The channel is anodised to 20 micron to protect it against corrosion as well as our stainless steel components are all grade 316/A4. Finished in a brushed stainless steel effect.
- Worldwide Standards**
 Has been tested to achieve building standards worldwide.



Mega Grip Complete Kit

Full 3 Metres of the Mega Grip Complete Kit include:

- 3 metres of base channel
- 6 metres of sealing gasket
- 6 metres of top seal
- 12 glass clamps suitable for your glass thickness
- 12 clamp bars & bolts



No need for additional cladding as the profile is supplied in a stainless steel like finish. Suitable for 25mm to 33mm thick glass. Supplied in 3 metre lengths.

Description	Code	Unit of Sale
Mega Grip Complete Kit for 25mm Glass	KCVMGKIT025	3 Metre
Mega Grip Complete Kit for 25.5mm Glass	KCVMGKIT025.5	3 Metre
Mega Grip Complete Kit for 31.5mm Glass	KCVMGKIT031.5	3 Metre
Mega Grip Complete Kit for 33mm Glass	KCVMGKIT033	3 Metre

Mega Grip Clamp Kit

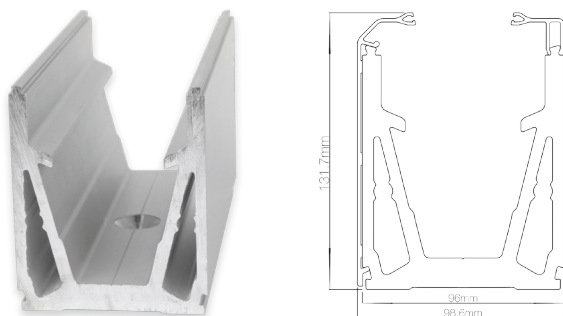
Complete Glass Clamp kit, includes:

- 12 Glass Clamps
- 12 Clamp Bars
- 12 Clamp Bolts
- 6 Metre Gasket



Clamp kits have enough components to suit a 3 metre length of channel. See page 16 for installation instructions.

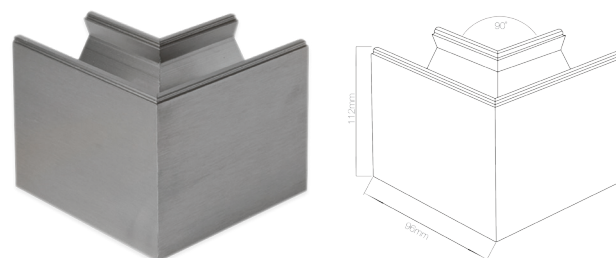
Description	Code	Unit of Sale
Mega Grip Clamp Kit for 25mm Glass	KCVMG025	Kit
Mega Grip Clamp Kit for 25.5mm Glass	KCVMG025.5	Kit
Mega Grip Clamp Kit for 31.5mm Glass	KCVMG031.5	Kit
Mega Grip Clamp Kit for 33mm Glass	KCVMG033	Kit



Base Drilled Channel Brushed Effect

This is the main section that hold the glass. It is pre-drilled at 100mm from the ends and then 200mm there after. The hole is to suit a 12mm countersunk head fixing bolt and is counter bored to sink the bolt head.

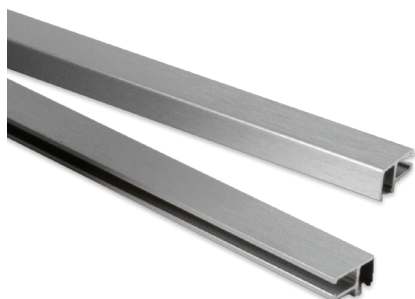
Description	Code	Unit of Sale
Base Drilled Channel Brushed Effect	KCVMG001	3 Metre



90° Corner Brushed Effect

A prefabricated 90 degree corner supplied to reduce the amount of cutting needed on sites. On a standard balcony with 90 degree corners the installer only needs to make straight cuts.

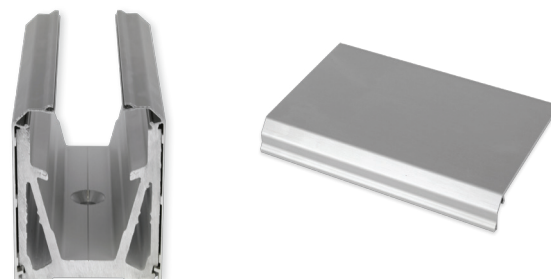
Description	Code	Unit of Sale
90 Degree Corner Brushed Effect	KCVMG090	Each



Base Top Seal

The top seal holds the gasket in place and is pressed onto the channel at the end of the installation.

Description	Code	Unit of Sale
Base Top Seal Strip Brushed Effect	KCVMG002	3 Metre



Side Cladding

Similar to the top seal the side cladding holds the gasket in place and is pressed onto the channel at the end of the installation. It covers the clamps from view and prevents debris from entering the channel.

Description	Code	Unit of Sale
Base Side Cladding Brushed Effect	KCVMG003	3 Metre



Mega Grip Gasket

Additional gasket can be supplied in any length. There are two types that cover all the glass thicknesses catered for. The Large Gasket will suit 25mm to 25.5mm glass and the Small Gasket will suit 31.5mm to 33mm glass.

Description	Code	Unit of Sale
Large Gasket - 25mm to 25.5mm	KCVMG004	Metre
Small Gasket - 31.5mm to 33mm	KCVMG005	Metre



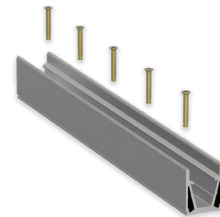
Joining Dowels

The dowels are used to allow for better aligning when joining channel each of the sections together.

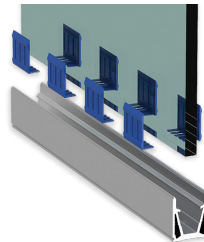
Description	Code	Unit of Sale
Joining Dowels	KCV009	Each

Mega Grip Installation Instructions

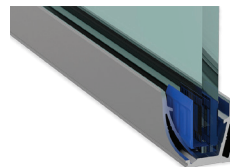
Step 1: Bolt the base channel to the substrate.



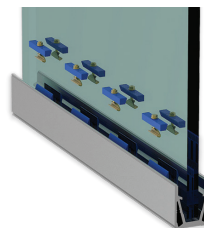
Step 2: Squeeze the glass clamps onto the glass (4 per metre).



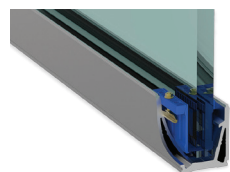
Step 3: Seat the glass within the base channel.



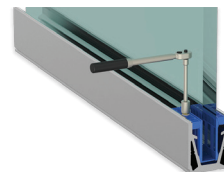
Step 4: Insert the clamp bar through the anchor and loosely tighten the bolt.



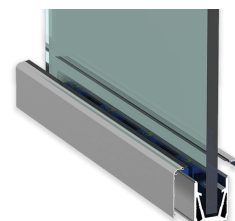
Step 5: Slide the grapple clasps down and through the channel so they sit in position on the glass clamp.



Step 6: Adjust the glass into position and tighten the nuts on each side of the Mega Grip system to 15Nm.



Step 7: Finally, insert the gasket into the top recess of the cladding and firmly press on to the channel.



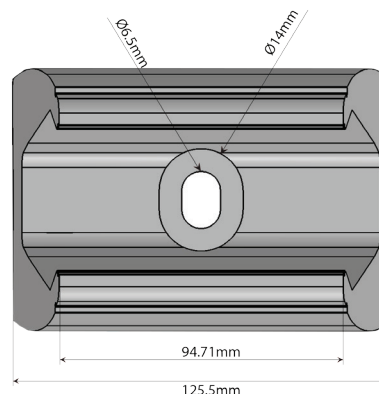
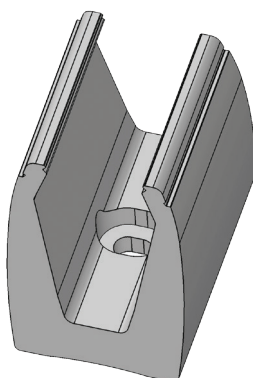
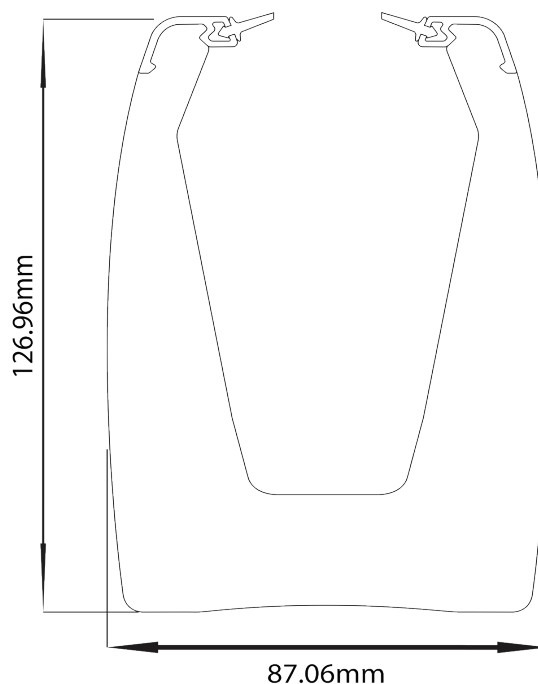
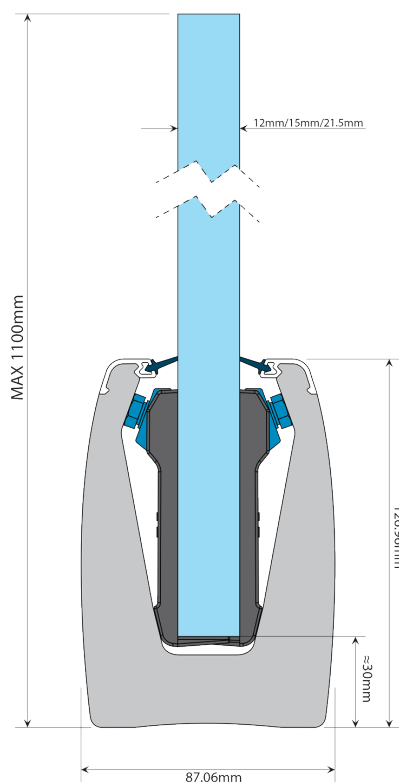


Spig-Lite Pro

Frameless Balustrade System For
Domestic Use Up To 0.74kn

Spig Lite Pro Spigot

- **Only 2 Spigots Required Per Metre**
Extremely quick to install, elongated holes to allow for easy alignment.
- **No Need to Drill the Glass**
Our glass clamping mechanism removes the need to hold the glass with locking pins.
- **No Drainage Issues**
Free draining between the spigots means no water gets trapped inside the balcony area.
- **Simple Installation**
Horizontal alignment of each glass panel, ensuring the top edge of the glass is perfectly aligned.
- **Worldwide Standards**
Tested in accordance with BS6180 for domestic glass railings up to 0.74kn line load.



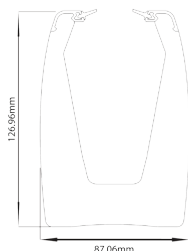
Spig-Lite Pro Complete Spigot Kit

Each kit suits glass up to 1 metre wide. One Spig-Lite Pro kit contains:

- 2 x Spig-Lite Pro Spigots
- 2 x Glass clamp kits
- 4 x Gaskets
- 4 x Top Clips
- 1 x Spanner



Description	Code	Unit of Sale
Spig-Lite Pro Complete Spigot Kit for 12mm Glass	KCVSLPKIT012	Each
Spig-Lite Pro Complete Spigot Kit for 15mm Glass	KCVSLPKIT015	Each
Spig-Lite Pro Complete Spigot Kit for 21.5mm Glass	KCVSLPKIT021	Each



Base Drilled Adjustable Spigot System

The spigots are in an anodised graphite finish. These are individual spigots where only two are required per metre of glass, or 3 per 1500mm wide glass. Only one hole/bolt is required per Spigot making it one of the quickest balustrade systems to install. No Locking pin is required therefore the glass doesn't need drilling.

Description	Code	Unit of Sale
Base Drilled Adjustable Spigot System	KCVSLP001	Each



10mm Adjustment Spanner

10mm steel spanner with angle to reach the clamp bolts to tighten/loosen the glass.

Description	Code	Unit of Sale
10mm Adjustment Spanner	KCV008	Each

Spigot System Top Clip

Replacement top clip for our Spig-Lite Pro glass balustrade spigot system.

Description	Code	Unit of Sale
Top Clip - Graphite	KCVSLP002	Each



Spigot System Gaskets

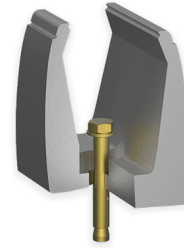
Replacement gasket for our Spig-Lite Pro glass spigot system:

- Small Gasket to suit 19mm to 25.5mm glass
- Large Gasket to suit 12mm to 17.5mm glass

Description	Code	Unit of Sale
Small Gasket 19-25.5mm	KCVSLP003	128mm
Large Gasket 12-17.5mm	KCVSLP004	128mm

Spig Lite Pro Installation Instructions

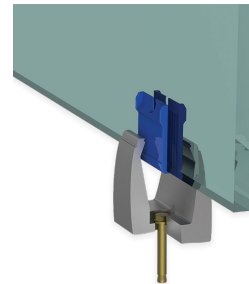
Step1: Bolt the spigots to the substrate
(Only 2 spigots required per metre).



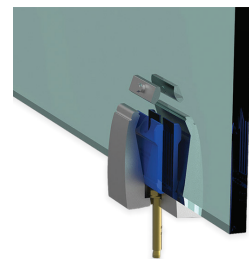
Step2: Firmly squeeze the clamps around the glass and lower into the Spigot.



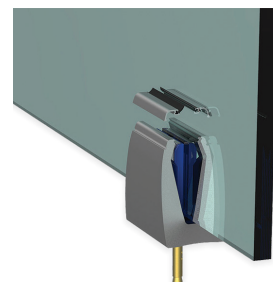
Step 3: Thread the bolt in the clamp bar and position them within the moulded clamp area.



Step 4: Adjust and lock the glass in position by undoing the screw.



Step 5 Slip the gasket in the top recess of the top bead. Apply adhesive to the top bead and place on the Spigot.



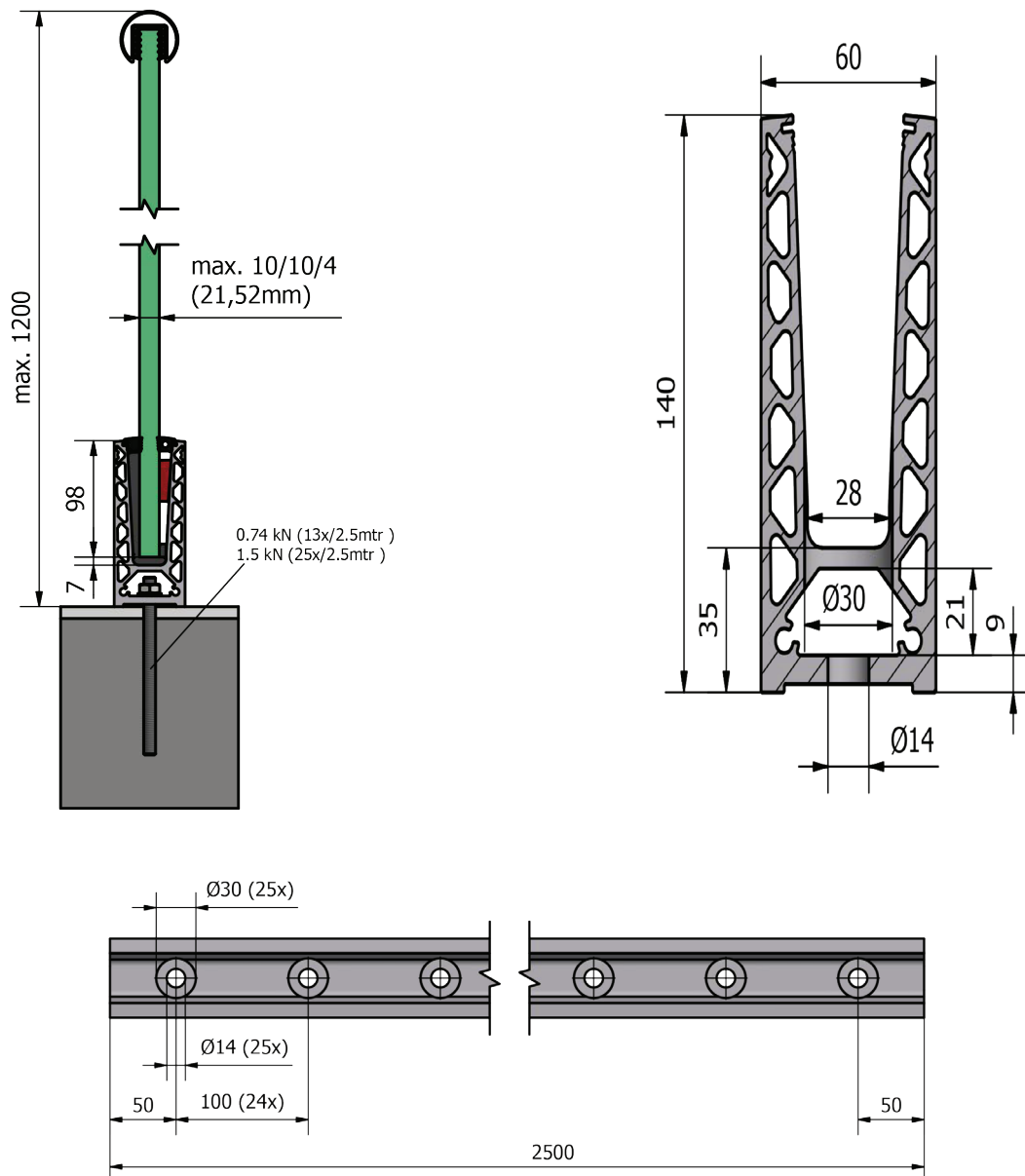
A photograph of a modern balcony with a frameless glass balustrade. The balcony floor is made of large, light-colored stone tiles. The balustrade consists of vertical glass panels held together by thin black lines. The balcony overlooks a large blue lake, with green mountains in the background under a clear blue sky. The balcony is part of a building with a concrete ceiling and walls.

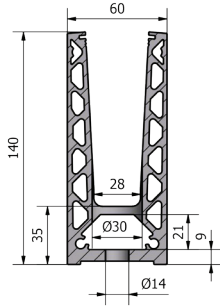
ONLEVEL 1.5kN Surface & Side Mount Systems

Frameless Balustrade System
For Domestic & Commercial Use

Surface Mounted Channel

- Slender, attractive design and low maintenance
- Drainage Holes
- For glass thicknesses of 12mm to 21.52mm
- For domestic installations, use with a mounting distance of 200mm
- For commercial installations, use a mounting distance of 100mm
- Tested according to BS6180





Bottom Drilled Channel

Only 60mm wide this profile can achieve a line load level of 1.5kN with the appropriate glass selection. Finished in a brushed stainless steel look as standard with other colours and finishes available on request.

Description	Code	Unit of Sale
Bottom Drilled Channel	K.ON.10.6020.002.12	2.5 Metres



90° Corner for Base Channel

Internal/External corner Finished in a brushed stainless steel look as standard with other colours and finishes available on request.

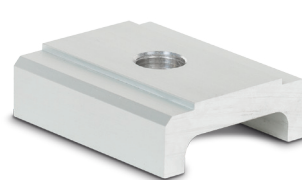
Description	Code	Unit of Sale
90 Degree Corner	K.ON.10.6020.390.12	Each



Base Channel End Caps

Finished in a brushed stainless steel look as standard with other colours and finishes available on request. Easily fixed in place by means of a high bond slim adhesive tape.

Description	Code	Unit of Sale
Base Channel End Caps	K.ON.10.6020.490.12	Each



Base Channel Spacer & Connecting Pin

Spacer - Finished in a brushed stainless steel look as standard with other colours and finishes available on request.
Installed with every fixing to provide a drainage outlet.
Pin - 40mm long connecting pins for the easy alignment and installation of the main profile. 2 required per joint.

Description	Code	Unit of Sale
Base Channel Spacer	K.ON.10.6020.500.12	Pack of 13
Connecting Pins	K.ON.90.7001.640.31	8 Pieces

Flex Fit Kit 1.5kN

Installation kit suitable for 2.5metres of channel and glass thickness of 12 - 21.52mm.

The flex fit system allows for the plumbing of each individual glass panel up to 34mm in relation to the perpendicular.
The flex fit system allows for installation and plumbing of the glass from one side only so is ideal for projects where access to the outside is limited such as high rise projects.

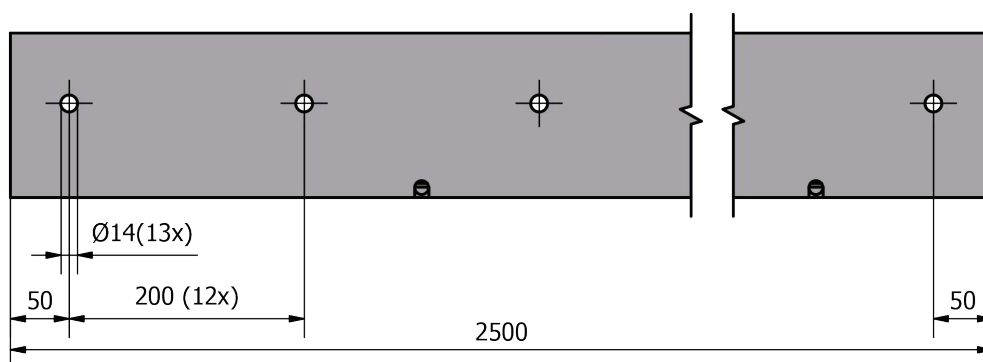
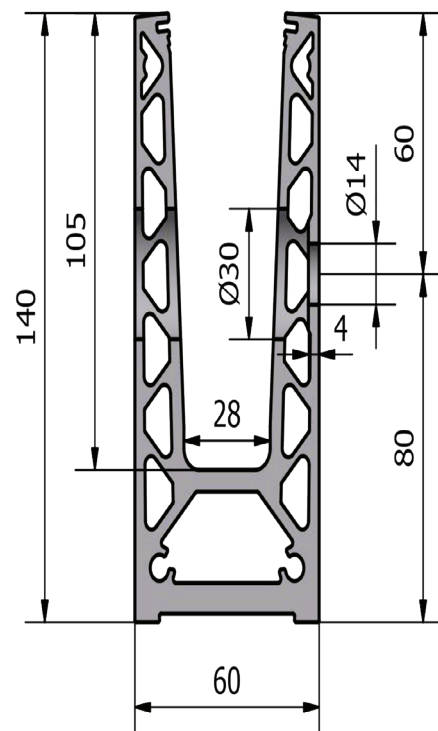
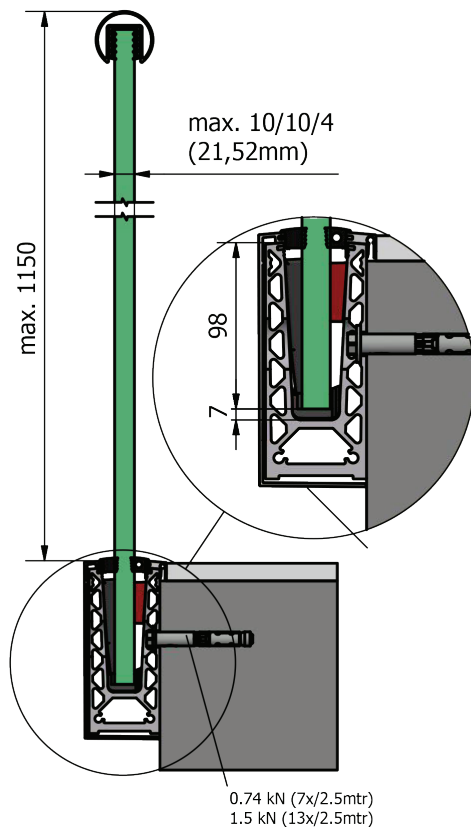
Description	Code	Unit of Sale
Flex Fit Kit 12mm	K.ON.90.0502.112.00	kit
Flex Fit Kit 15mm	K.ON.90.0502.115.00	kit
Flex Fit Kit 17.52mm	K.ON.90.0502.118.00	kit
Flex Fit Kit 19mm	K.ON.90.0502.119.00	kit
Flex Fit Kit 21.52mm	K.ON.90.0502.122.00	kit

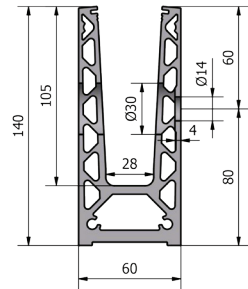


Installation
tools on
page 26

Side Mount Channel

- Slender, attractive design and low maintenance
- Drainage Holes
- For glass thicknesses of 12mm to 21.52mm
- For domestic installations, use with a mounting distance of 200mm
- For commercial installations, use a mounting distance of 100mm
- Tested according to BS6180





Side Drilled Channel

Only 60mm wide this profile can achieve a line load level of 1.5kN with the appropriate glass selection. Finished in a brushed stainless steel look as standard with other colours and finishes available on request.

Description	Code	Unit of Sale
Side Drilled Channel	K.ON.10.6021.002.12	2.5 Metres



Endcaps Left & Right

Easily fixed end caps for use *without* the snapframe cladding. Supplied as standard in a brushed stainless steel finish.

Description	Code	Unit of Sale
End Caps - Left	K.ON.10.6021.400.12	Each
End Caps - Right	K.ON.10.6021.450.12	Each



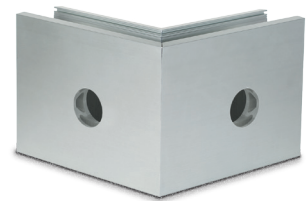
Snapframe Cladding

Finished in a brushed stainless steel look as standard with other colours and finishes available on request. Easily clips on to the main profile to cover the fixing holes and the underside of the profile.

Description	Code	Unit of Sale
Snapframe Cladding	K.ON.10.6021.205.12	2.5 Metres



Internal Corner



External Corner

90° Corner - Internal & External

Internal and External corner, finished in a brushed stainless steel look as standard with other colours and finishes available on request. Makes for easy installation with only straight cutting needed on sites.

Description	Code	Unit of Sale
90 Degree Corner - Internal	K.ON.10.6021.300.12	Each
90 Degree Corner - External	K.ON.10.6021.300.12	Each



Endcaps for Snapframe - Left & Right

Easily fixed end caps for use *with* the snapframe cladding. Supplied as standard in a brushed stainless steel finish.

Description	Code	Unit of Sale
End Caps - Left (snapframe)	K.ON.10.6021.410.12	Each
End Caps - Right (snapframe)	K.ON.10.6021.460.12	Each



Connecting Pins

40mm long connecting pins for the easy alignment and installation of the main profile. 2 required per joint.

Description	Code	Unit of Sale
Connecting Pins	K.ON.90.7001.640.31	8 Pieces

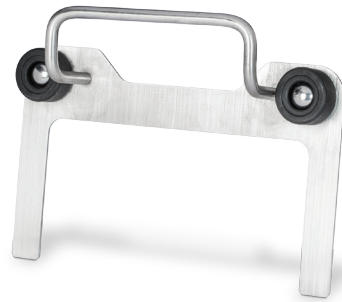


Flex Fit Kit 1.5kN

Installation kit suitable for 2.5metres of channel and glass thickness of 12 - 21.52mm.

The flex fit system allows for the plumbing of each individual glass panel up to 34mm in relation to the perpendicular. The flex fit system allows for installation and plumbing of the glass from one side only so is ideal for projects where access to the outside is limited such as high rise projects.

Description	Code	Unit of Sale
On Level Flex Fit Kit 12mm	K.ON.90.0502.112.00	kit
On Level Flex Fit Kit 15mm	K.ON.90.0502.115.00	kit
On Level Flex Fit Kit 17.52mm	K.ON.90.0502.118.00	kit
On Level Flex Fit Kit 19mm	K.ON.90.0502.119.00	kit
On Level Flex Fit Kit 21.52mm	K.ON.90.0502.122.00	kit



Flex-Fit Tool

The Flex-Fit tool allows you to easily fit the flex fit clamps to the profile. This tool allows you to adjust/plumb the glass easily from one side without marking or damaging the main profile.

Description	Code	Unit of Sale
On Level Flex Fit Tool	K.ON.90.0100.110.00	Each



Combi Tool

The combi tool is generally used for installing the fixed wedges once the glass is plumbed. It is also used to smoothly install the rubber gaskets without the need to continually bend down making the installation faster and neater.

Description	Code	Unit of Sale
On Level Flex Combi Tool	K.ON.90.0100.100.00	Each

Onlevel Flex-Fit Installation Instructions

Step 1: Mount the profile to the substrate in accordance with the profile specifications to achieve the specified strength.

Step 2: Install the Flex-Fit glass holders as per the measurements on the diagram and with the high side to the outside.

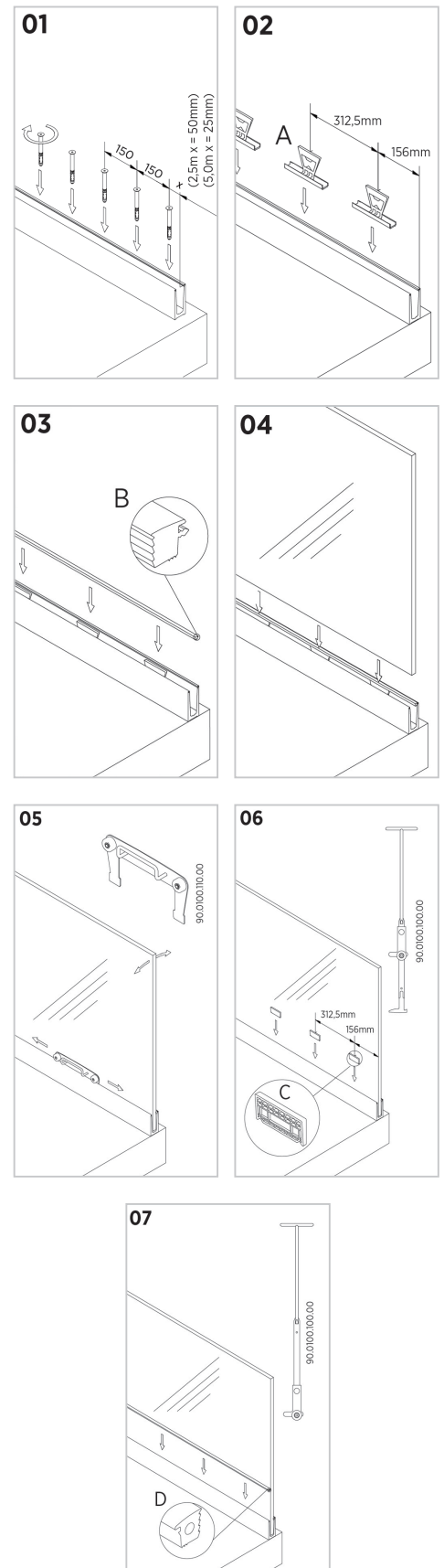
Step 3: Install the rubber gasket on the outside.

Step 4: Drop in the glass panel.

Step 5: Using the Flex-Fit tool adjust and plumb the glass panels.

Step 6: When adjusted to the desired position, insert the fixed wedges according to the measurements using the Combi-Tool.

Step 7: Insert the internal gasket and roll into position again using the combi tool.



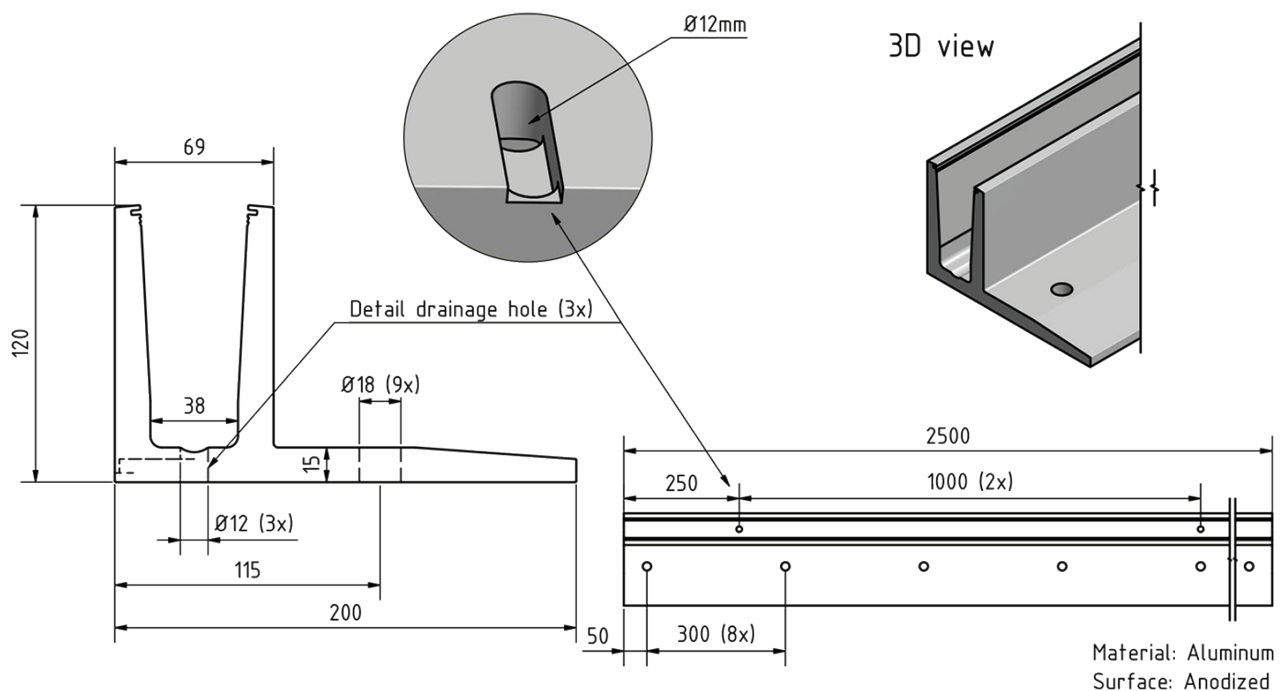


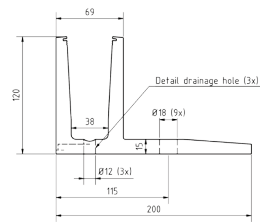
ONLEVEL 3.0kN Surface & Side Mount Systems

Frameless Balustrade System
For Commercial Use

3030 Top Mount

- Slimline, elegant design and low-maintenance
- Drainage Holes
- Suitable for glass thicknesses of 21.52mm to 31.52mm
- For use where fixing at the edge may be unsuitable
- Ideally suited for installations under floor level
- For commercial and public use that require line load levels up to 3.0kN

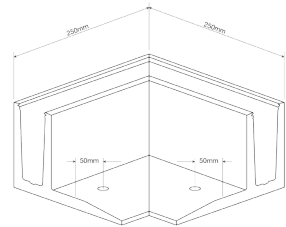




3030 Top Mount Channel

Pre drilled every 300mm and suitable for an M16 fixing. Suitable for line loads up to 3kN in accordance with BS6180. Using the Flex-Fit system the installation can be done from one side only and the glass adjusted accordingly. Supplied in plain anodised aluminium. 2.5 metres

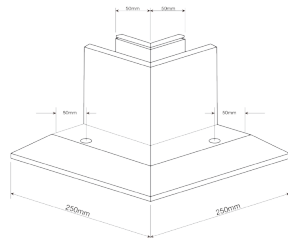
Description	Code	Unit of Sale
3030 Top Mount Channel	K.ON.10.3030.002.11	2.5 Metres



90° Corner For 3030 Channel - Internal

Both inside and outside 90° corners supplied to match the main profile and to save on the need for complicated cutting on sites.

Description	Code	Unit of Sale
90° Corner - Internal	K.ON.10.3030.300.11	Each



90° Corner For 3030 Channel - External

Both inside and outside 90° corners supplied to match the main profile and to save on the need for complicated cutting on sites.

Description	Code	Unit of Sale
90° Corner - External	K.ON.10.3030.350.11	Each



Endcaps Left

Left Endcaps to match the main profile. Supplied in plain anodised aluminium.

Description	Code	Unit of Sale
End Cap - Left	K.ON.3030.400.11	Each



Endcaps Right

Right Endcaps to match the main profile. Supplied in plain anodised aluminium.

Description	Code	Unit of Sale
End Cap - Right	K.ON.3030.450.11	Each



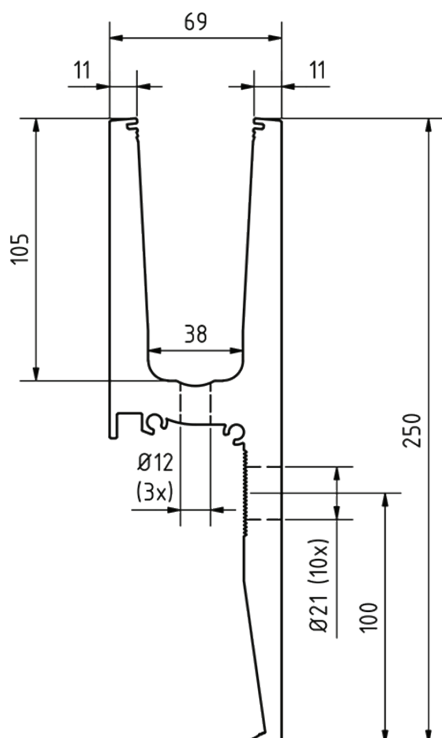
Flex Fit Kit 3.0kN

Installation kit suitable for 2.5metres of channel and glass thickness of 21.52 - 25.52mm. The flex fit system allows for the plumbing of each individual glass panel up to 34mm in relation to the perpendicular. The flex fit system allows for installation and plumbing of the glass from one side only so is ideal for projects where access to the outside is limited such as high rise projects.

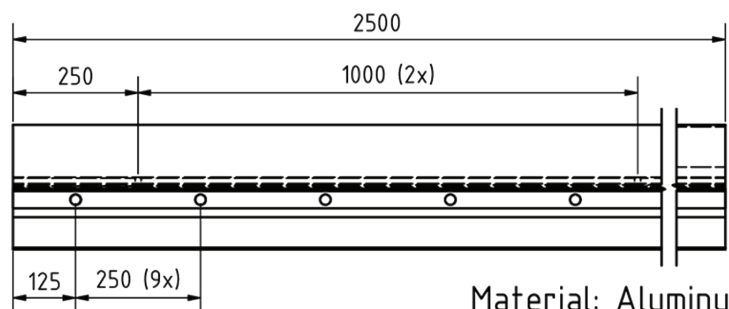
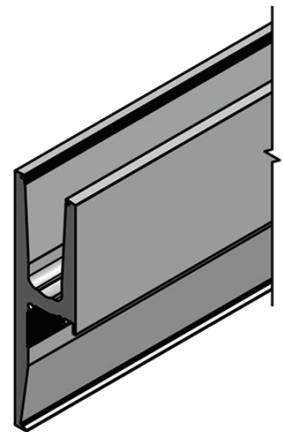
Description	Code	Unit of Sale
Flex Fit Kit 3.0kN - 21.52mm	K.ON.90.0502.322.00	Kit
Flex Fit Kit 3.0kN - 25.52mm	K.ON.90.0502.326.00	Kit
Flex Fit Kit 3.0kN - 31.52mm	K.ON.90.0503.332.00	Kit

3031 Side Mount

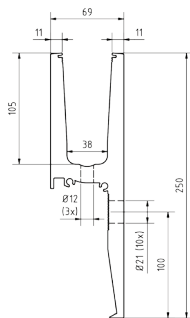
- Slimline, elegant design and low-maintenance
- Drainage Holes
- For glass thicknesses of 21.52mm to 31.52mm
- For internal and external use
- Suitable for commercial and public use that require line load levels up to 3.0kN.



3D view



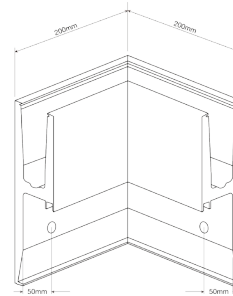
Material: Aluminum
Surface: anodized



3031 Side Mount Channel

Side mounted slim channel that can take up to line load weights of 3.0kN. Supplied in a plain anodised aluminium finish for internal and external installations.

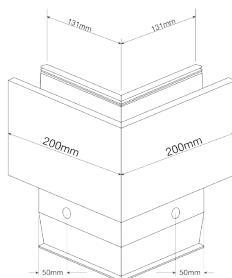
Description	Code	Unit of Sale
3031 Side Mount Channel	K.ON.3031.002.11	2.5 metres



90° Corner for 3031 Channel - Internal

Both inside and outside 90° corners supplied to match the main profile and to save on the need for complicated cutting on sites

Description	Code	Unit of Sale
90° Corner - Internal	K.ON.10.3031.300.11	Each



90° Corner for 3031 Channel - External

Both inside and outside 90° corners supplied to match the main profile and to save on the need for complicated cutting on sites

Description	Code	Unit of Sale
90 Degree Corner - External	K.ON.10.3031.350.11	Each



End Caps with Cover Strip - Left

Left endcaps For Use With Cover Strip. Supplied in a plain anodised aluminium to match the main profile and cover strip.

Description	Code	Unit of Sale
End Caps (cover strip) - Left	K.ON.10.3031.410.11	Each



End Caps with Cover Strip - Right

Right endcaps For Use With Cover Strip. Supplied in a plain anodised aluminium to match the main profile and cover strip.

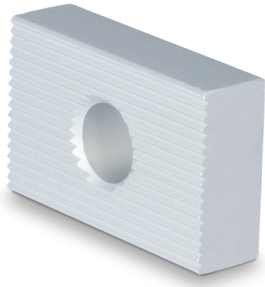
Description	Code	Unit of Sale
End Caps (Cover Strip) - Left	K.ON.10.3031.460.11	Each



Cover Strip

An anodised aluminium cover strip (cladding) to cover the underside of the profile and the fixings.

Description	Code	Unit of Sale
Cover Strip	K.ON.10.3031.202.11	2.5 metres



Mounting Block

An optional mounting block that enables the profile to be adjusted by 5mm in either direction using the toothed section on the profile and the mounting block. 10 required per 2.5 metre length.

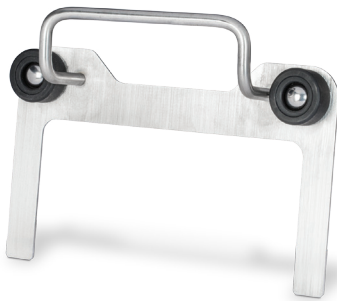
Description	Code	Unit of Sale
Mounting Block	K.ON.90.7002.010.11	8 Pieces



Connecting Pins

40mm long connecting pins for the easy alignment and installation of the main profile. 2 required per joint.

Description	Code	Unit of Sale
Connecting Pins	K.ON.90.7001.640.31	8 Pieces



Flex-Fit Tool

The Flex-Fit tool allows you to easily fit the flex fit clamps to the profile. This tool allows you to adjust/plumb the glass easily from one side without marking or damaging the main profile.

Description	Code	Unit of Sale
On Level Flex Fit Tool	K.ON.90.0100.110.00	Each



Combi Tool

The combi tool is generally used for installing the fixed wedges once the glass is plumbed. It is also used to smoothly install the rubber gaskets without the need to continually bend down making the installation faster and neater.

Description	Code	Unit of Sale
On Level Flex Combi Tool	K.ON.90.0100.100.00	Each



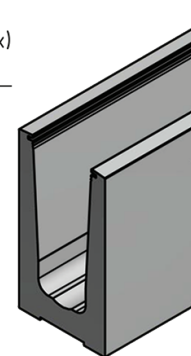
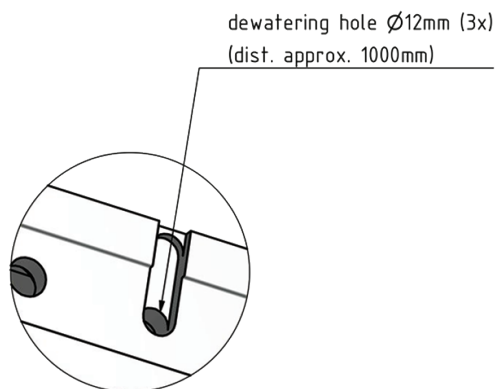
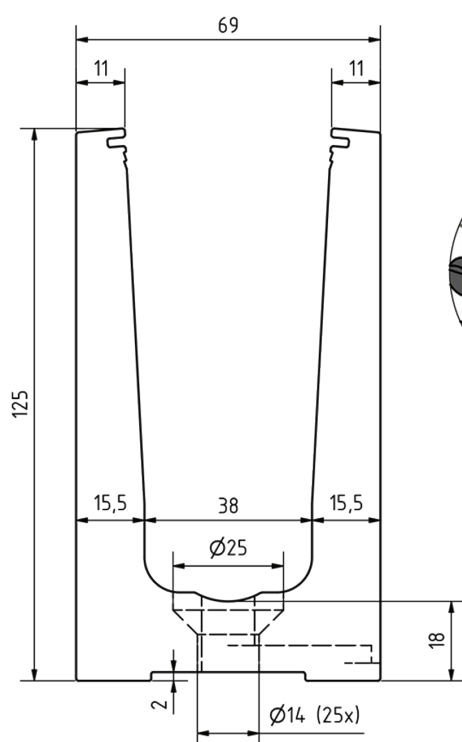
Flex Fit Kit 3.0kN

Installation kit suitable for 2.5metres of channel and glass thickness of 21.52 - 25.52mm. The flex fit system allows for the plumbing of each individual glass panel up to 34mm in relation to the perpendicular. The flex fit system allows for installation and plumbing of the glass from one side only so is ideal for projects where access to the outside is limited such as high rise projects.

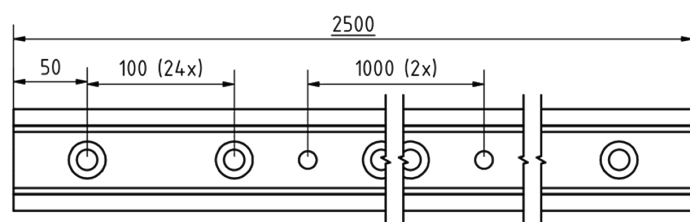
Description	Code	Unit of Sale
Flex Fit Kit 3.0kN - 21.52mm	K.ON.90.0502.322.00	Kit
Flex Fit Kit 3.0kN - 25.52mm	K.ON.90.0502.326.00	Kit
Flex Fit Kit 3.0kN - 31.52mm	K.ON.90.0503.332.00	Kit

6030 Top Mount

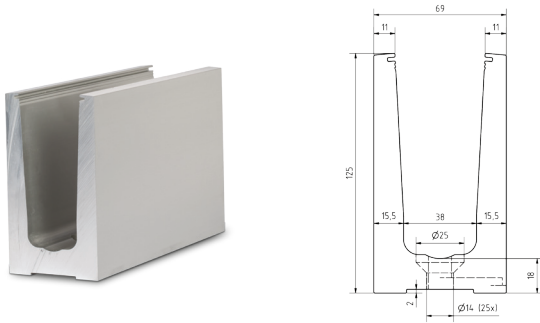
- Slimline, elegant design and low-maintenance
- Drainage Holes
- For glass thicknesses of 21.52mm to 31.52mm
- For public/commercial use and loads up to 3.0kN with the correct glass selection



3D-view



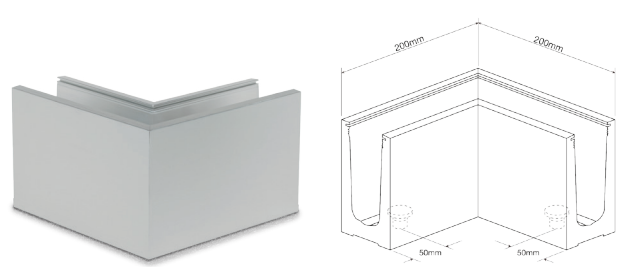
Material: Aluminum
Surface: natural anodized



6030 Top Mount Channel

Still only 69mm wide this channel is suitable for glass thickness 21.52 - 31.52mm and line loads up to 3.0kn according to BS6180. Supplied in an anodised aluminium finish making it suitable for internal and external applications.

Description	Code	Unit of Sale
6030 Top Mount Channel	K.ON.10.6030.002.11	2.5 Metres



90° Corner for 6030 Top Mount Channel

Supplied in an anodised aluminium finish to match the main profile making it suitable for internal and external applications. The pre formed corner saves any complicated cutting of the channel on sites.

Description	Code	Unit of Sale
90 Degree Corner	K.ON.10.6030.390.11	Each



Endcaps Left & Right

Left/Right endcaps supplied in plain anodised aluminium to match the main channel. Easily installed by using the high bond double side tape.

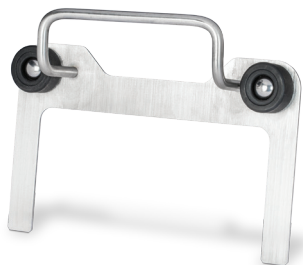
Description	Code	Unit of Sale
End Caps	K.ON.10.6030.490.11	Each



Flex Fit Kit 3.0kN

Installation kit suitable for 2.5metres of channel and glass thickness of 21.52 - 31.52mm. The flex fit system allows for the plumbing of each individual glass panel up to 34mm in relation to the perpendicular. The flex fit system allows for installation and plumbing of the glass from one side only so is ideal for projects where access to the outside is limited such as high rise projects.

Description	Code	Unit of Sale
Flex Fit Kit 3.0kN - 21.52mm	K.ON.90.0502.322.00	Kit
Flex Fit Kit 3.0kN - 25.52mm	K.ON.90.0502.326.00	Kit
Flex Fit Kit 3.0kN - 31.52mm	K.ON.90.0503.332.00	Kit



Flex-Fit Tool

The Flex-Fit tool allows you to easily fit the flex fit clamps to the profile. This tool allows you to adjust/plumb the glass easily from one side without marking or damaging the main profile.

Description	Code	Unit of Sale
On Level Flex Fit Tool	K.ON.90.0100.110.00	Each



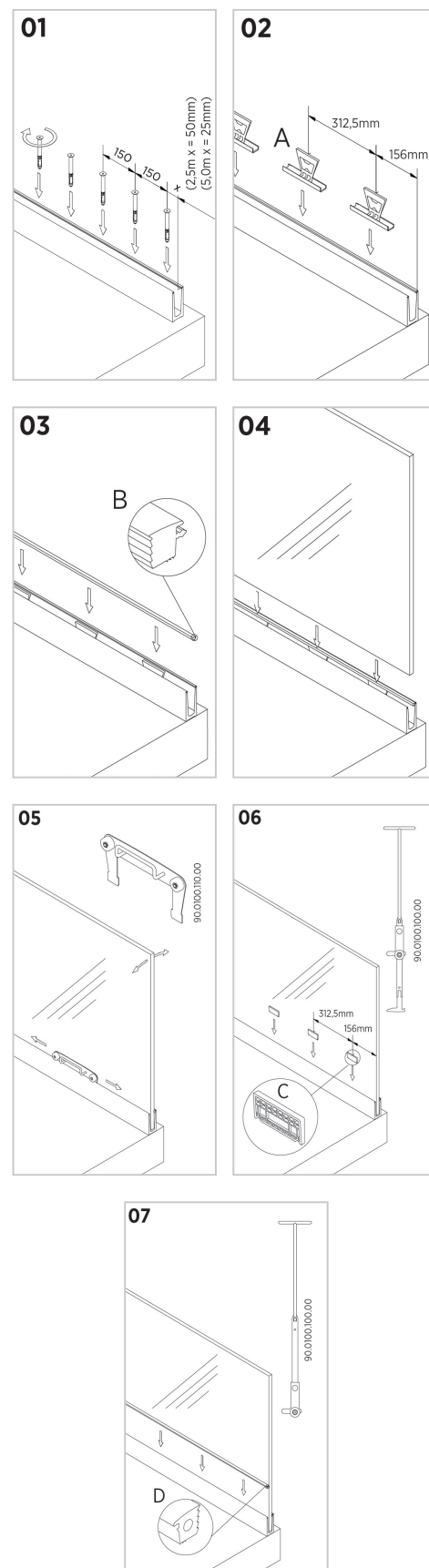
Combi Tool

The combi tool is generally used for installing the fixed wedges once the glass is plumbed. It is also used to smoothly install the rubber gaskets without the need to continually bend down making the installation faster and neater.

Description	Code	Unit of Sale
On Level Flex Combi Tool	K.ON.90.0100.100.00	Each

Onlevel Flex-Fit Installation Instructions

- Step 1:** Mount the profile to the substrate in accordance with the profile specifications to achieve the specified strength.
- Step 2:** Install the Flex-Fit glass holders as per the measurements on the diagram and with the high side to the outside.
- Step 3:** Install the rubber gasket on the outside.
- Step 4:** Drop in the glass panel.
- Step 5:** Using the Flex-Fit tool adjust and plumb the glass panels.
- Step 6:** When adjusted to the desired position, insert the fixed wedges according to the measurements using the Combi-Tool.
- Step 7:** Insert the internal gasket and roll into position again using the combi tool.





Panel Supports

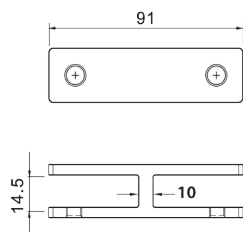
180 Degree SS Glass to Glass Panel Support

- A slimmer, frameless panel support system
- To suit 10mm to 21.52mm glass
- Supplied with rubbers
- Duplex 2205 (ultra marine stainless)
- All products are available in satin finish

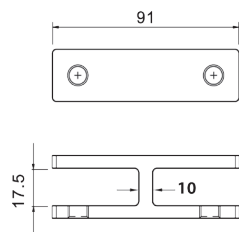


Description

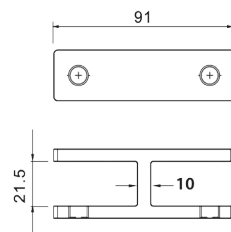
Description	Code	Unit of Sale
180 Degree Panel Support - 10mm - 12mm Glass	K.PS.180.10.12.S	Each
180 Degree Panel Support - 13.52mm - 15mm Glass	K.PS.180.13.15.S	Each
180 Degree Panel Support - 16.76mm - 19mm Glass	K.PS.180.16.19.S	Each
180 Degree Panel Support - 20mm - 21.52mm Glass	K.PS.180.20.21.S	Each



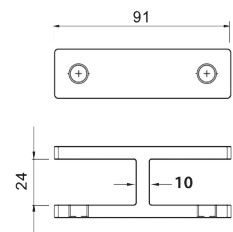
For 10mm to 12mm Glass



For 13.52mm to 15mm Glass



For 16.76mm to 19mm Glass



For 20mm to 21.52mm Glass

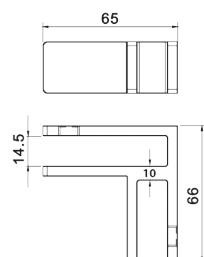
90 Degree SS Glass to Glass Panel Support

- A slimmer, frameless panel support system
- To suit 10mm to 21.52mm glass
- Supplied with rubbers
- Duplex 2205 (ultra marine stainless)
- All products are available in satin finish

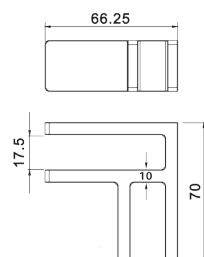


Description

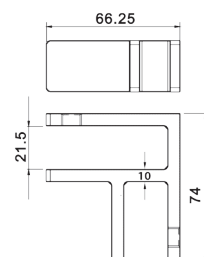
Description	Code	Unit of Sale
90 Degree Panel Support - 10mm - 12mm Glass	K.PS.90.10.12.S	Each
90 Degree Panel Support - 13.52mm - 15mm Glass	K.PS.90.13.15.S	Each
90 Degree Panel Support - 16.76mm - 19mm Glass	K.PS.90.16.19.S	Each
90 Degree Panel Support - 20mm - 21.52mm Glass	K.PS.90.20.21.S	Each



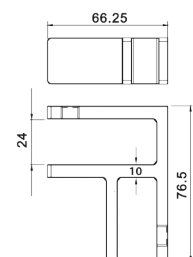
For 10mm to 12mm Glass



For 13.52mm to 15mm Glass



For 16.76mm to 19mm Glass



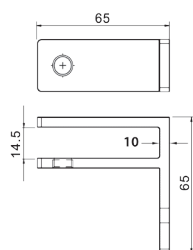
For 20mm to 21.52mm Glass

Wall to Glass SS Panel Support

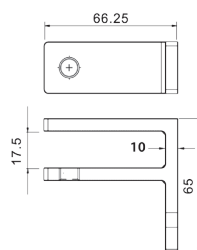
- A slimmer, frameless panel support system
- To suit 10mm to 21.52mm glass
- Supplied with rubbers
- Duplex 2205 (ultra marine stainless)
- All products are available in satin finish



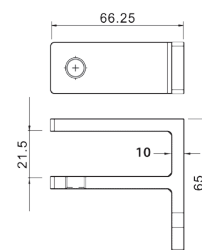
Description	Code	Unit of Sale
Wall to Glass SS Panel Support - 10mm - 12mm Glass	K.PS.90W.10.12.S	Each
Wall to Glass SS Panel Support - 13.52mm - 15mm Glass	K.PS.90W.13.15.S	Each
Wall to Glass SS Panel Support - 16.76mm - 19mm Glass	K.PS.90W.16.19.S	Each
Wall to Glass SS Panel Support - 20mm - 21.52mm Glass	K.PS.90W.20.21.S	Each



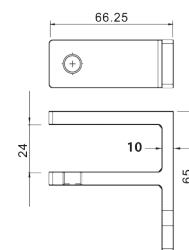
For 10mm to 12mm Glass



For 13.52mm to 15mm Glass



For 16.76mm to 19mm Glass



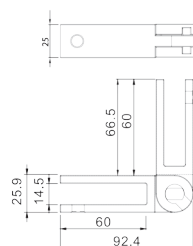
For 20mm to 21.52mm Glass

Adjustable SS Glass to Glass Panel Support

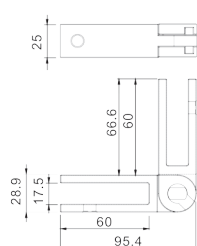
- A slimmer, frameless panel support system
- The adjustment can be from 90° To 180°
- Slide, rotate, no screw assembly
- To suit 10mm to 21.52mm glass
- Supplied with rubbers
- Duplex 2205 (ultra marine stainless)
- All products are available in satin finish



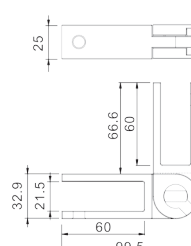
Description	Code	Unit of Sale
Adjustable SS Glass to Glass Panel Support - 10mm - 12mm Glass	K.PS.ADJ.10.12.S	Each
Adjustable SS Glass to Glass Panel Support - 13.52mm - 15mm Glass	K.PS.ADJ.13.15.S	Each
Adjustable SS Glass to Glass Panel Support - 16.76mm - 19mm Glass	K.PS.ADJ.16.19.S	Each
Adjustable SS Glass to Glass Panel Support - 20mm - 21.52mm Glass	K.PS.ADJ.20.21.S	Each



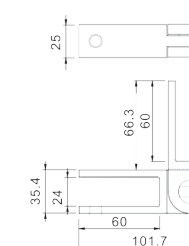
For 10mm to 12mm Glass



For 13.52mm to 15mm Glass



For 16.76mm to 19mm Glass



For 20mm to 21.52mm Glass

Kwixset

Expanding Cement



Kwixset Expanding Cement

Kwixset quickly and firmly embeds objects like hand-rails, bolts, brackets or fixtures in concrete, stone, brick, tile, plaster and terrazzo. Bond is strong and durable and defies severe strain, stress and vibration.

The most common use for kwixset in the glass industry is for setting glass in a deep U shaped channel for balustrading. Its liquid properties and fast setting formula make it easy to fill the channel and secure the glass. Mixed to a workable mortar-like consistency, Kwixset sets in 15-20 minutes and hardens to stone-strength in an hour.

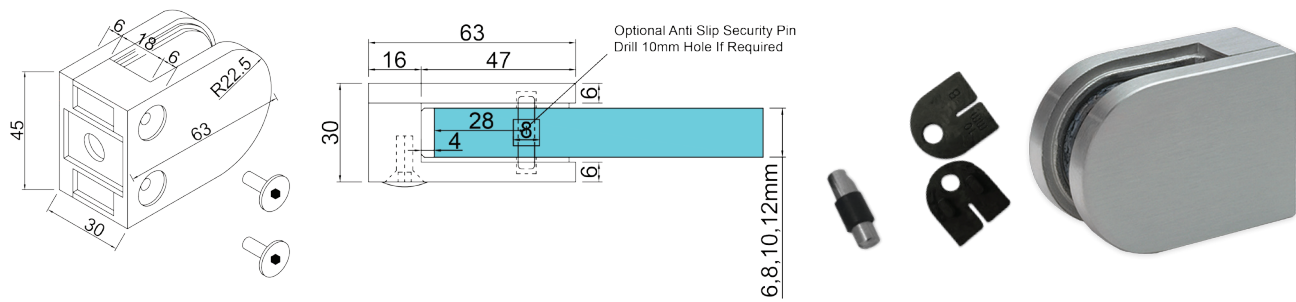
Kwixset, unlike a lot of its competitors on the market, is suitable for indoor and outdoor use without the need for additional cover or protection.

WARNING: Kwixset has very strong expansion properties which generate the high tensile loads that can be achieved. Therefore we do not recommend its use in hollow bricks, concrete block, limestone or granite. Always leave at least 4 inches from the edge of the concrete to the hole.

Description	Yield Per Bucket	Code	Unit of Sale
Kwixset Expanding Cement 25lbs Int/Ext	0.0065 cu metres	N0046	25 Pounds (11.3kg)
Kwixset Expanding Cement 50lbs Int/Ext	0.013 cu metres	N0047	50 Pounds (22.7kg)



Glass Clamps

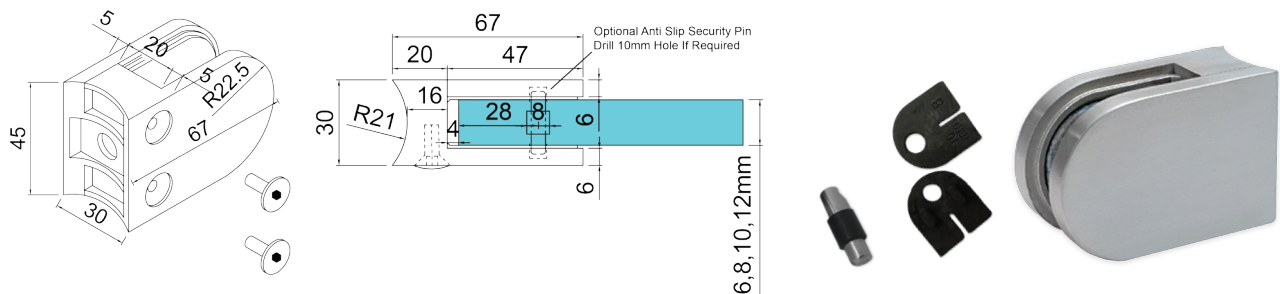


Glass Clamp - 63mm x 45mm - Flat Back

A 63mm x 45mm D shaped clamp. Suitable for mounting on a flat surface. For stairs, glass balconies, counter dividers, retail glass displays and splash guards. Supplied with an optional anti-slip safety pin which allows you to drill the glass to ensure that it never slips downwards over time. These clamps are suitable for glass panels weighing up to approximately 34kgs per four clamps.

Available in 304 grade satin (brushed) stainless steel, 316 grade satin (brushed) stainless steel and 316 grade polished stainless steel (mirror finished).

Description	Material	Finish	Post Type	Code	Unit of Sale
Glass Clamp 63x45mm	304 Stainless Steel	Satin (Brushed)	Flat	K.GC.6345.304.000.S	Each
Glass Clamp 63x45mm	316 Stainless Steel	Satin (Brushed)	Flat	K.GC.6345.316.000.S	Each
Glass Clamp 63x45mm	316 Stainless Steel	Polished (Mirror)	Flat	K.GC.6345.316.000.P	Each
Rubber Gasket for 6mm Glass	Rubber	n/a	n/a	K.GC.6345.RUB.06	Set
Rubber Gasket for 8mm Glass	Rubber	n/a	n/a	K.GC.6345.RUB.08	Set
Rubber Gasket for 10mm Glass	Rubber	n/a	n/a	K.GC.6345.RUB.10	Set
Rubber Gasket for 12mm Glass	Rubber	n/a	n/a	K.GC.6345.RUB.12	Set

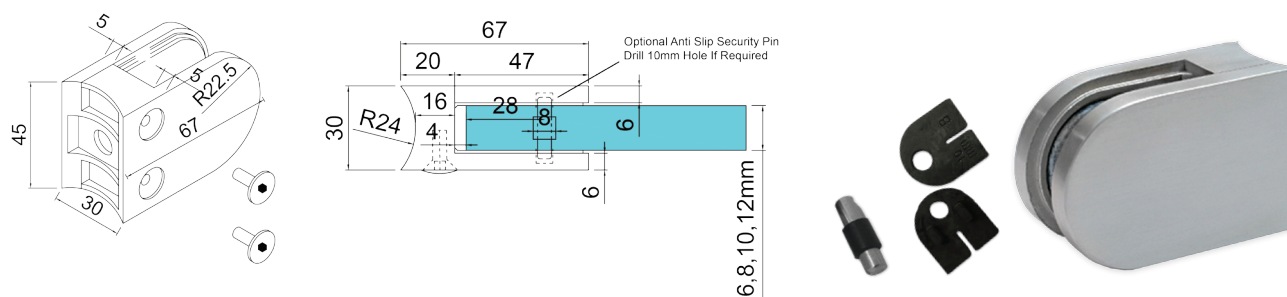


Glass Clamp - 63mm x 45mm - 42mm Post

A 63mm x 45mm D shaped clamp. Suitable for mounting to a 42mm diameter post. Used mainly indoors for stairs, glass balconies, counter dividers, retail glass displays and splash guards. Supplied with an optional anti-slip safety pin which allows you to drill the glass to ensure that it never slips downwards over time. These clamps are suitable for loads up to approximately 34kgs per four clamps.

Available in 304 grade satin (brushed) stainless steel, 316 grade satin (brushed) stainless steel and 316 grade polished stainless steel.

Description	Material	Finish	Post Type	Code	Unit of Sale
Glass Clamp 63x45mm	304 Stainless Steel	Satin (Brushed)	42mm Diameter	K.GC.6345.304.042.S	Each
Glass Clamp 63x45mm	316 Stainless Steel	Satin (Brushed)	42mm Diameter	K.GC.6345.316.042.S	Each
Glass Clamp 63x45mm	316 Stainless Steel	Polished (Mirror)	42mm Diameter	K.GC.6345.316.042.P	Each
Rubber Gasket for 6mm Glass	Rubber	n/a	n/a	K.GC.6345.RUB.06	Set
Rubber Gasket for 8mm Glass	Rubber	n/a	n/a	K.GC.6345.RUB.08	Set
Rubber Gasket for 10mm Glass	Rubber	n/a	n/a	K.GC.6345.RUB.10	Set
Rubber Gasket for 12mm Glass	Rubber	n/a	n/a	K.GC.6345.RUB.12	Set



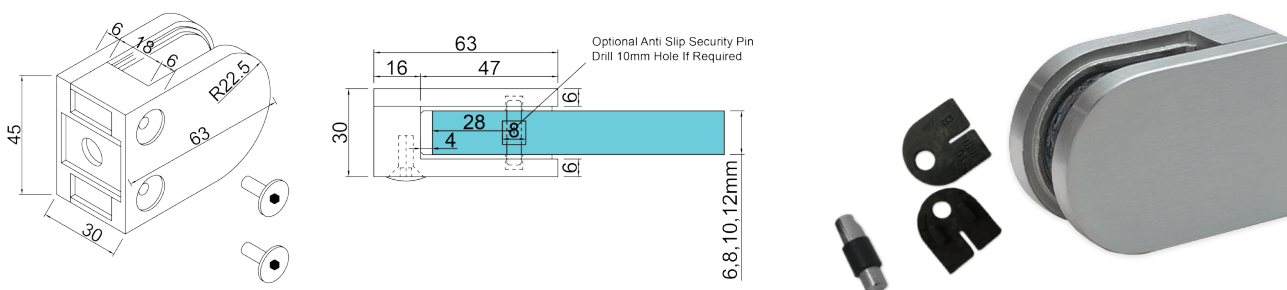
Glass Clamp - 63mm x 45mm - 48mm Post

A 63mm x 45mm D shaped clamp. Suitable for mounting to a 48mm diameter post.

Used mainly indoors for stairs, glass balconies, counter dividers, retail glass displays and splash guards. Supplied with an optional anti-slip safety pin which allows you to drill the glass to ensure that it never slips downwards over time. These clamps are suitable for loads up to approximately 34kgs per four clamps.

Available in 304 grade satin (brushed) stainless steel, 316 grade satin (brushed) stainless steel and 316 grade polished stainless steel.

Description	Material	Finish	Post Type	Code	Unit of Sale
Glass Clamp 63x45mm	304 Stainless Steel	Satin (Brushed)	48mm Diameter	K.GC.6345.304.048.S	Each
Glass Clamp 63x45mm	316 Stainless Steel	Satin (Brushed)	48mm Diameter	K.GC.6345.316.048.S	Each
Glass Clamp 63x45mm	316 Stainless Steel	Polished (Mirror)	48mm Diameter	K.GC.6345.316.048.P	Each
Rubber Gasket for 6mm Glass	Rubber	n/a	n/a	K.GC.6345.RUB.06	Set
Rubber Gasket for 8mm Glass	Rubber	n/a	n/a	K.GC.6345.RUB.08	Set
Rubber Gasket for 10mm Glass	Rubber	n/a	n/a	K.GC.6345.RUB.10	Set
Rubber Gasket for 12mm Glass	Rubber	n/a	n/a	K.GC.6345.RUB.12	Set



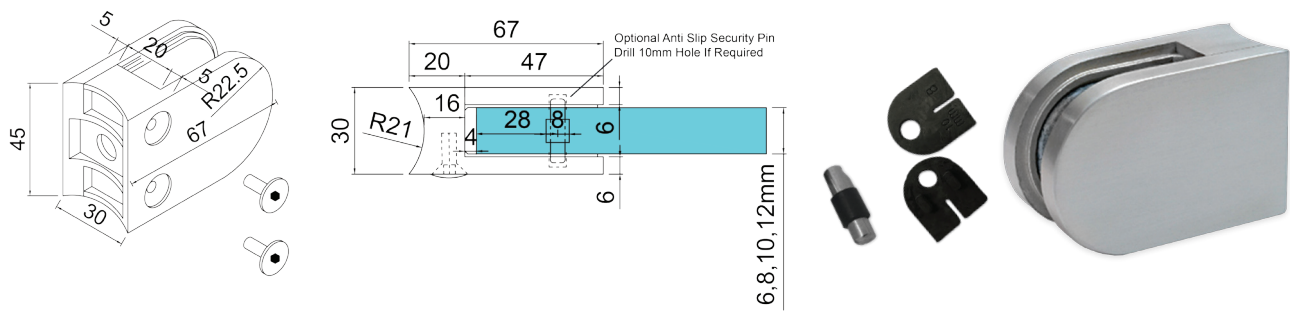
Glass Clamp - 63mm x 45mm - Zinc - Flat Back

A 63mm x 45mm D shaped clamp. Suitable for mounting on a flat surface.

For indoor use only on stairs, glass balconies, counter dividers, retail glass displays and splash guards. Supplied with an optional anti-slip safety pin which allows you to drill the glass to ensure that it never slips downwards over time. These clamps are suitable for loads up to approximately 34kgs per four clamps.

Available in Antique Brass, Polished and Satin.

Description	Material	Finish	Post Type	Code	Unit of Sale
Glass Clamp 63x45mm (10mm Glass)	Zinc	Antique Brass	Flat	K.GC.6345.ZN.000.AB	Each
Glass Clamp 63x45mm	Zinc	Polished (Mirror)	Flat	K.GC.6345.ZN.000.MP	Each
Glass Clamp 63x45mm	Zinc	Satin (Brushed)	Flat	K.GC.6345.ZN.000.SS	Each
Rubber Gasket for 6mm Glass	Rubber	n/a	n/a	K.GC.6345.RUB.06	Set
Rubber Gasket for 8mm Glass	Rubber	n/a	n/a	K.GC.6345.RUB.08	Set
Rubber Gasket for 10mm Glass	Rubber	n/a	n/a	K.GC.6345.RUB.10	Set
Rubber Gasket for 12mm Glass	Rubber	n/a	n/a	K.GC.6345.RUB.12	Set



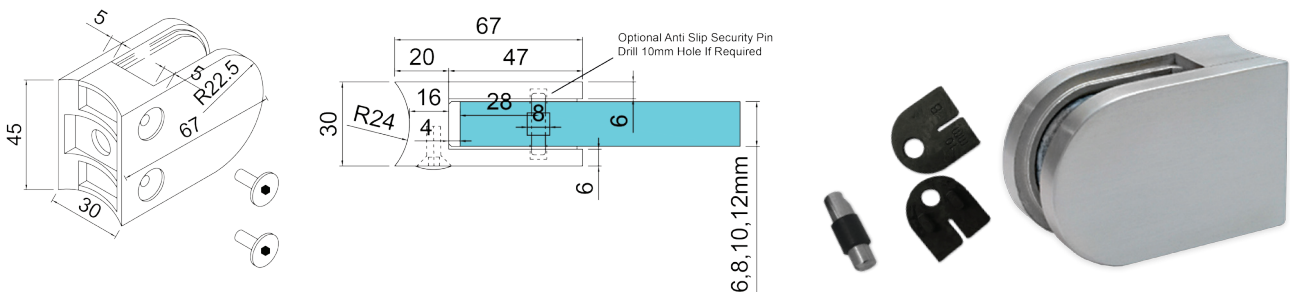
Glass Clamp - 63mm x 45mm - Zinc - 42mm Post

A 63mm x 45mm D shaped clamp. Suitable for mounting on a 42mm diameter post.

For indoor use only on stairs, glass balconies, counter dividers, retail glass displays and splash guards. Supplied with an optional anti-slip safety pin which allows you to drill the glass to ensure that it never slips downwards over time. These clamps are suitable for loads up to approximately 34kgs per four clamps.

Available in Polished and Satin.

Description	Material	Finish	Post Type	Code	Unit of Sale
Glass Clamp 63x45mm	Zinc	Polished (Mirror)	42mm Diameter	K.GC.6345.ZN.042.MP	Each
Glass Clamp 63x45mm	Zinc	Satin (Brushed)	42mm Diameter	K.GC.6345.ZN.042.SS	Each
Rubber Gasket for 6mm Glass	Rubber	n/a	n/a	K.GC.6345.RUB.06	Set
Rubber Gasket for 8mm Glass	Rubber	n/a	n/a	K.GC.6345.RUB.08	Set
Rubber Gasket for 10mm Glass	Rubber	n/a	n/a	K.GC.6345.RUB.10	Set
Rubber Gasket for 12mm Glass	Rubber	n/a	n/a	K.GC.6345.RUB.12	Set



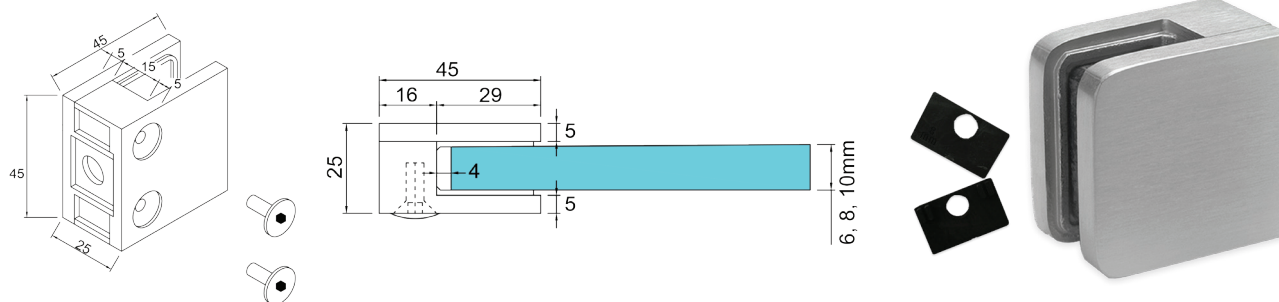
Glass Clamp - 63mm x 45mm - Zinc - 48mm Post

A 63mm x 45mm D shaped clamp. Suitable for mounting on a 48mm diameter post.

For indoor use only on stairs, glass balconies, counter dividers, retail glass displays and splash guards. Supplied with an optional anti-slip safety pin which allows you to drill the glass to ensure that it never slips downwards over time. These clamps are suitable for loads up to approximately 34kgs per four clamps.

Available in Polished and Satin.

Description	Material	Finish	Post Type	Code	Unit of Sale
Glass Clamp 63x45mm	Zinc	Polished (Mirror)	48mm Diameter	K.GC.6345.ZN.048.MP	Each
Glass Clamp 63x45mm	Zinc	Satin (Brushed)	48mm Diameter	K.GC.6345.ZN.048.SS	Each
Rubber Gasket for 6mm Glass	Rubber	n/a	n/a	K.GC.6345.RUB.06	Set
Rubber Gasket for 8mm Glass	Rubber	n/a	n/a	K.GC.6345.RUB.08	Set
Rubber Gasket for 10mm Glass	Rubber	n/a	n/a	K.GC.6345.RUB.10	Set
Rubber Gasket for 12mm Glass	Rubber	n/a	n/a	K.GC.6345.RUB.12	Set

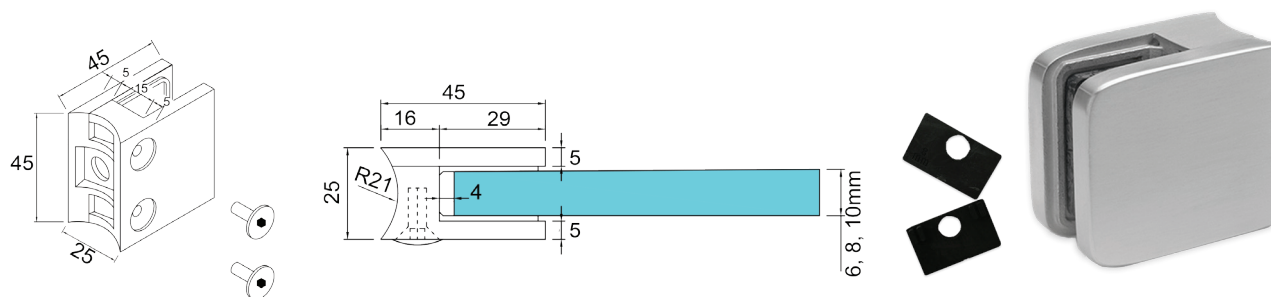


Glass Clamp - 45mm x 45mm - Flat Back

A 45mm x 45mm square shaped clamp. Suitable for mounting on a flat surface. For stairs, counter dividers, desk dividers and retail glass splash guards. Supplied with an optional anti slip safety pin which allows you to drill the glass to ensure that it never slips downwards over time. These clamps are suitable for loads up to approximately 20kgs per four clamps.

Available in 304 grade satin (brushed) stainless steel and 316 grade satin (brushed) stainless steel.

Description	Material	Finish	Post Type	Code	Unit of Sale
Glass Clamp 45x45mm	304 Stainless Steel	Satin (Brushed)	Flat	K.GC.4545.304.000.S	Each
Glass Clamp 45x45mm	316 Stainless Steel	Satin (Brushed)	Flat	K.GC.4545.316.000.S	Each
Rubber Gasket for 6mm Glass	Rubber	n/a	n/a	K.GC.4545.RUB.06	Set
Rubber Gasket for 8mm Glass	Rubber	n/a	n/a	K.GC.4545.RUB.08	Set
Rubber Gasket for 10mm Glass	Rubber	n/a	n/a	K.GC.4545.RUB.10	Set

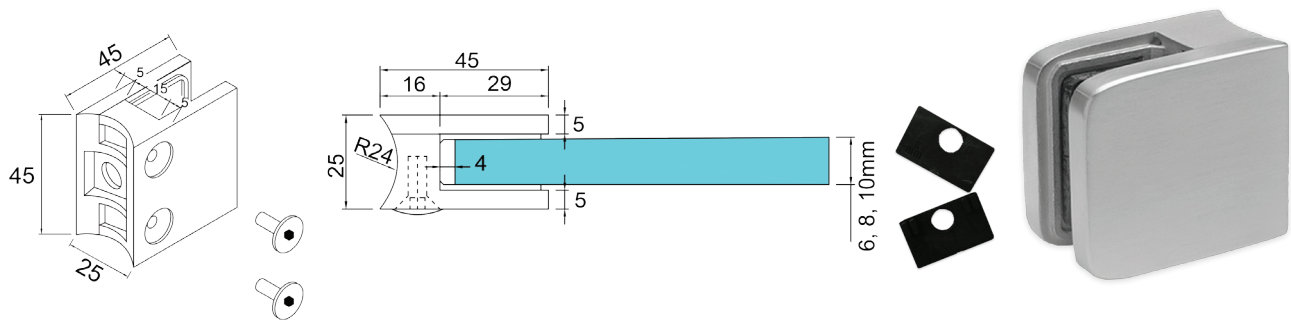


Glass Clamp - 45mm x 45mm - 42mm Post

A 45mm x 45mm square shaped clamp. Suitable for mounting on a 42mm diameter post. For stairs, counter dividers, desk dividers and retail glass splash guards. Supplied with an optional anti slip safety pin which allows you to drill the glass to ensure that it never slips downwards over time. These clamps are suitable for loads up to approximately 20kgs per four clamps.

Available in 304 grade satin (brushed) stainless steel and 316 grade satin (brushed) stainless steel.

Description	Material	Finish	Post Type	Code	Unit of Sale
Glass Clamp 45x45mm	304 Stainless Steel	Satin (Brushed)	42mm Diameter	K.GC.4545.304.042.S	Each
Glass Clamp 45x45mm	316 Stainless Steel	Satin (Brushed)	42mm Diameter	K.GC.4545.316.042.S	Each
Rubber Gasket for 6mm Glass	Rubber	n/a	n/a	K.GC.4545.RUB.06	Set
Rubber Gasket for 8mm Glass	Rubber	n/a	n/a	K.GC.4545.RUB.08	Set
Rubber Gasket for 10mm Glass	Rubber	n/a	n/a	K.GC.4545.RUB.10	Set

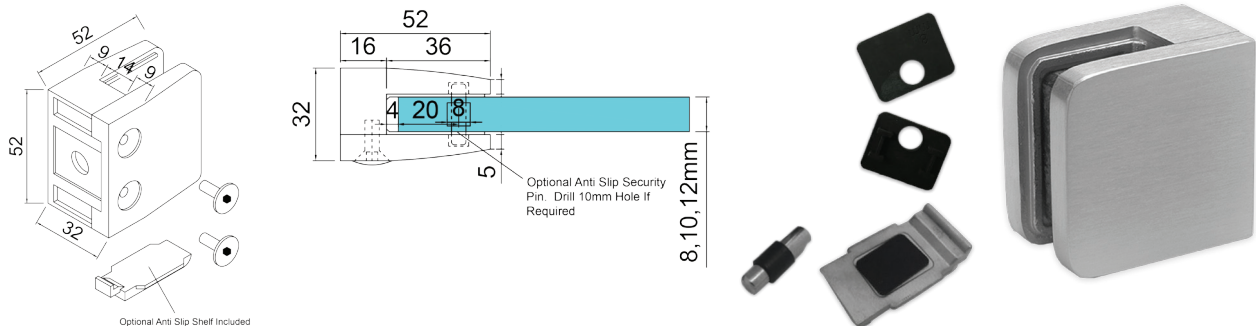


Glass Clamp - 45mm x 45mm - 48mm Post

A 45mm x 45mm square shaped clamp. Suitable for mounting on a 48mm diameter post. For stairs, counter dividers, desk dividers and retail glass splash guards. Supplied with an optional anti slip safety pin which allows you to drill the glass to ensure that it never slips downwards over time. These clamps are suitable for loads up to approximately 20kgs per four clamps.

Available in 304 grade satin (brushed) stainless steel and 316 grade satin (brushed) stainless steel.

Description	Material	Finish	Post Type	Code	Unit of Sale
Glass Clamp 45x45mm	304 Stainless Steel	Satin (Brushed)	48mm Diameter	K.GC.4545.304.048.S	Each
Glass Clamp 45x45mm	316 Stainless Steel	Satin (Brushed)	48mm Diameter	K.GC.4545.316.048.S	Each
Rubber Gasket for 6mm Glass	Rubber	n/a	n/a	K.GC.4545.RUB.06	Set
Rubber Gasket for 8mm Glass	Rubber	n/a	n/a	K.GC.4545.RUB.08	Set
Rubber Gasket for 10mm Glass	Rubber	n/a	n/a	K.GC.4545.RUB.10	Set

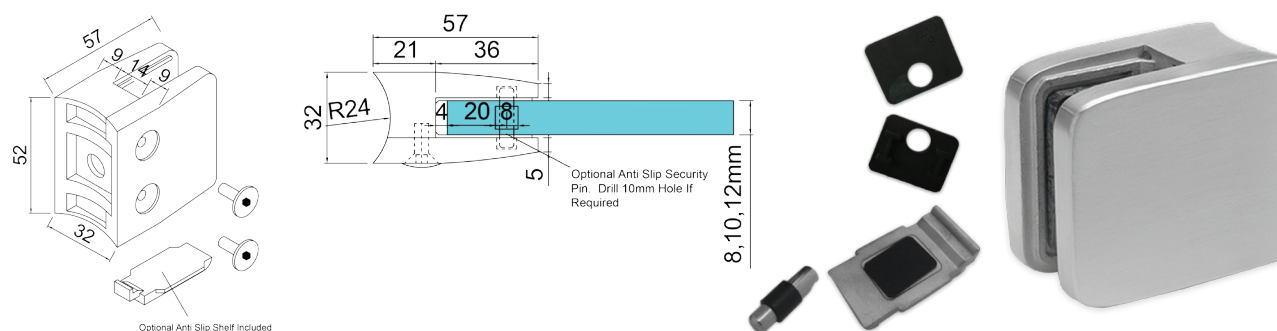


Glass Clamp - 52mm x 52mm - Flat Back

A 52mm x 52mm square shaped clamp. Suitable for mounting on a flat surface. Used mainly outdoors for stairs, glass balconies, pharmaceutical plants, food prep areas and any area subject to moisture. Supplied with an optional anti slip safety shelf which ensures that it never allows the glass to slip downwards over time. To use these shelves the clamps must be mounted at the corners of the glass panels. This clamp is also supplied with the optional anti slip pin which is used when the glass is drilled. These clamps are suitable for loads up to approximately 34kgs per four clamps.

Available in 316 grade satin (brushed) stainless steel.

Description	Material	Finish	Post Type	Code	Unit of Sale
Glass Clamp 52x52mm	316 Stainless Steel	Satin (Brushed)	Flat	K.GC.5252.316.000.S	Each
Rubber Gasket for 8mm Glass	Rubber	n/a	n/a	K.GC.5252.RUB.08	Set
Rubber Gasket for 10mm Glass	Rubber	n/a	n/a	K.GC.5252.RUB.10	Set
Rubber Gasket for 12mm Glass	Rubber	n/a	n/a	K.GC.5252.RUB.12	Set

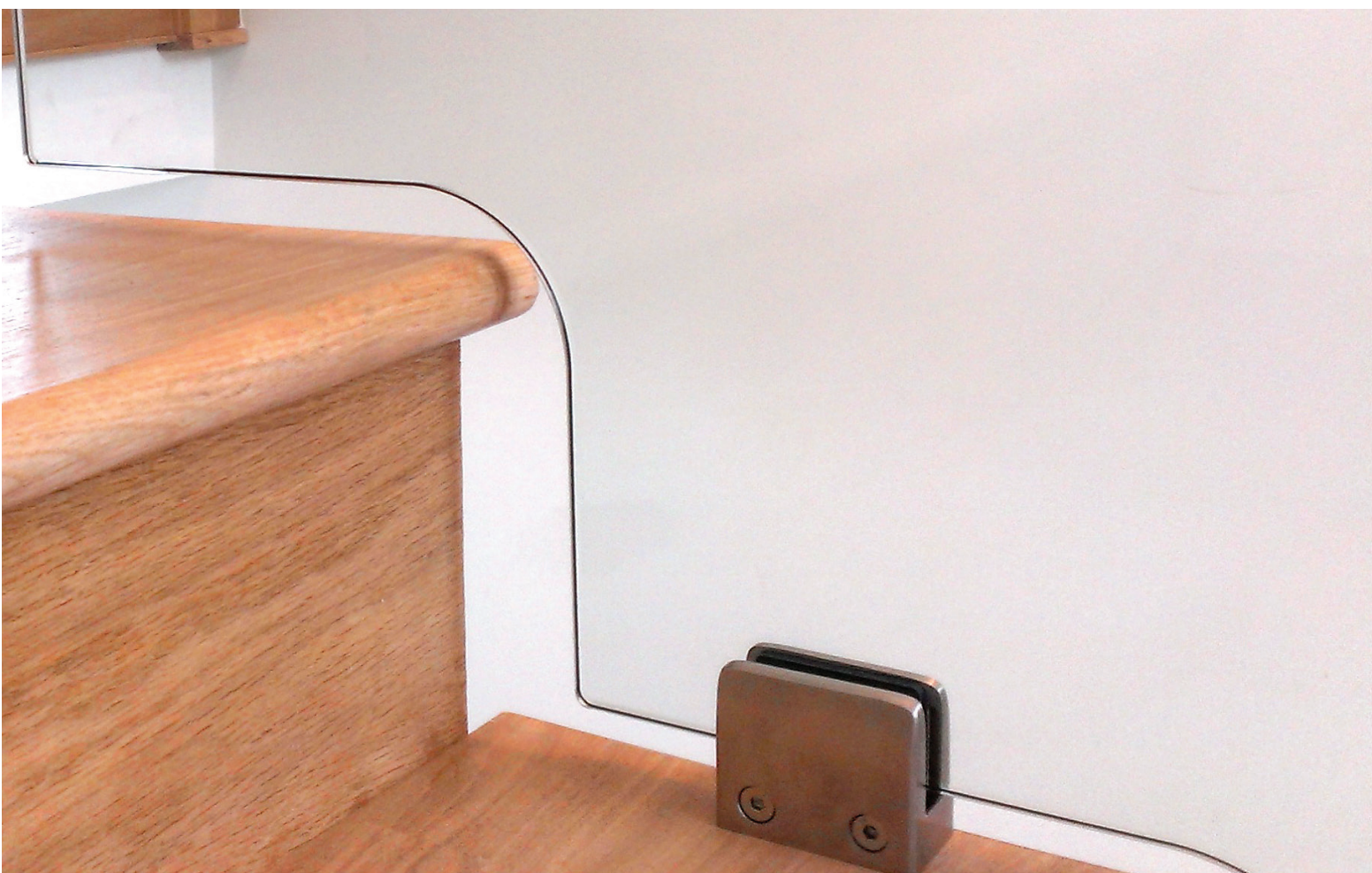


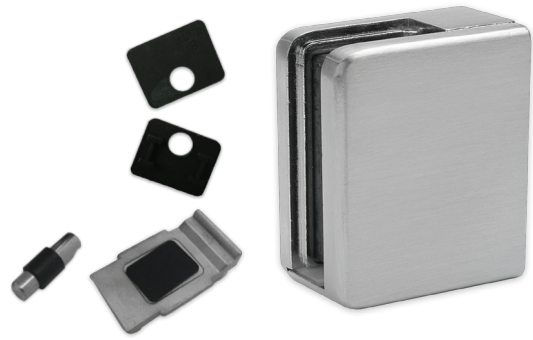
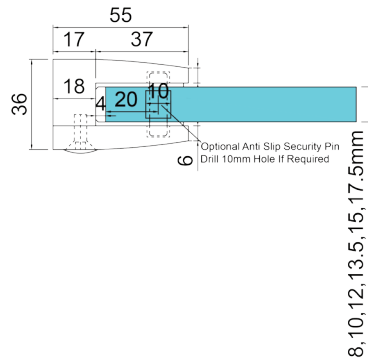
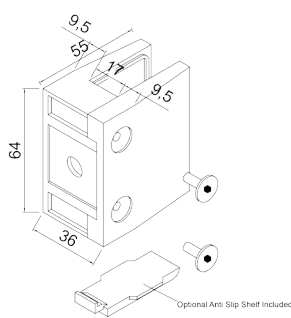
Glass Clamp - 52mm x 52mm - 48mm Post

A 52mm x 52mm square shaped clamp. Suitable for mounting on a 48mm diameter post. Used mainly outdoors for stairs, glass balconies, pharmaceutical plants, food prep areas and any area subject to moisture. Supplied with an optional anti slip safety shelf which ensures that it never allows the glass to slip downwards over time. To use these shelves the clamps must be mounted at the corners of the glass panels. This clamp is also supplied with the optional anti slip pin which is used when the glass is drilled. These clamps are suitable for loads up to approximately 34kgs per four clamps.

Available in 316 grade satin (brushed) stainless steel.

Description	Material	Finish	Post Type	Code	Unit of Sale
Glass Clamp 52x52mm	316 Stainless Steel	Satin (Brushed)	48mm Diameter	K.GC.5252.316.048.S	Each
Rubber Gasket for 8mm Glass	Rubber	n/a	n/a	K.GC.5252.RUB.08	Set
Rubber Gasket for 10mm Glass	Rubber	n/a	n/a	K.GC.5252.RUB.10	Set
Rubber Gasket for 12mm Glass	Rubber	n/a	n/a	K.GC.5252.RUB.12	Set



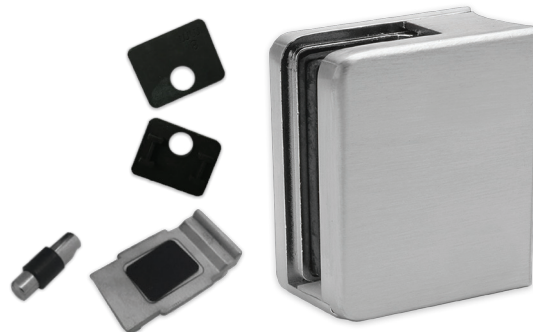
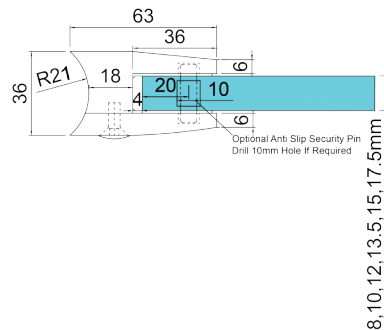
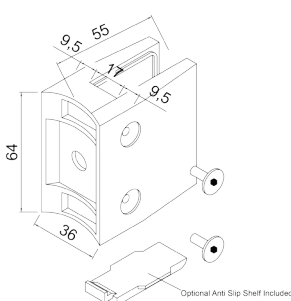


Glass Clamp - 67mm x 55mm - Flat Back

A 67mm x 55mm rectangular shaped clamp. Suitable for mounting on a flat surface. Used mainly outdoors for stairs, glass balconies, pharmaceutical plants, food prep areas and any area subject to moisture. Supplied with an optional anti slip safety shelf which ensures that it never allows the glass to slip downwards over time. To use these shelves the clamps must be mounted at the corners of the glass panels. This clamp is also supplied with the optional anti slip pin which is used when the glass is drilled. These clamps are suitable for loads up to approximately 50kgs per four clamps.

Available in 316 grade satin (brushed) stainless steel.

Description	Material	Finish	Post Type	Code	Unit of Sale
Glass Clamp 67x55mm	316 Stainless Steel	Satin (Brushed)	Flat	K.GC.6755.316.000.S	Each
Rubber Gasket for 8mm Glass	Rubber	n/a	n/a	K.GC.6755.RUB.08	Set
Rubber Gasket for 10mm Glass	Rubber	n/a	n/a	K.GC.6755.RUB.10	Set
Rubber Gasket for 12mm Glass	Rubber	n/a	n/a	K.GC.6755.RUB.12	Set
Rubber Gasket for 13.5mm Glass	Rubber	n/a	n/a	K.GC.6755.RUB.135	Set
Rubber Gasket for 15mm Glass	Rubber	n/a	n/a	K.GC.6755.RUB.15	Set
Rubber Gasket for 17.5mm Glass	Rubber	n/a	n/a	K.GC.6755.RUB.175	Set

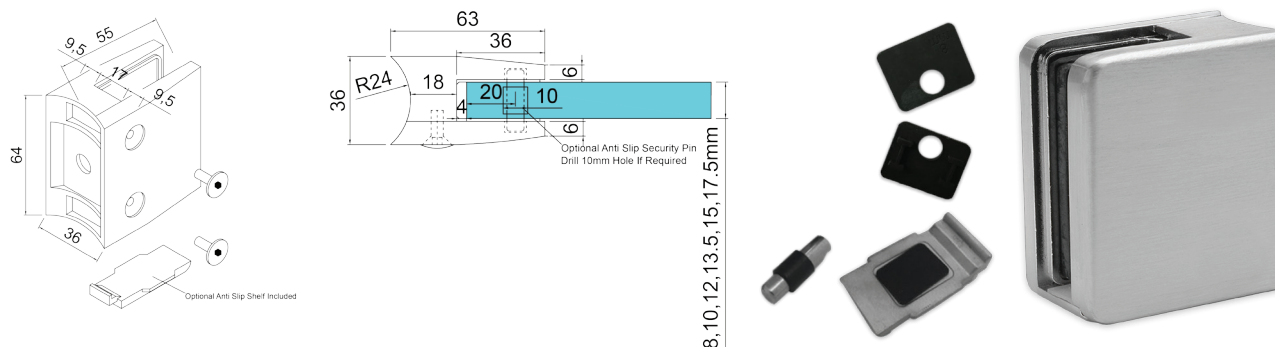


Glass Clamp - 67mm x 55mm - 42mm Post

A 67mm x 55mm rectangular shaped clamp. Suitable for mounting on a 42mm diameter post. Used mainly outdoors for stairs, glass balconies, pharmaceutical plants, food prep areas and any area subject to moisture. Supplied with an optional anti slip safety shelf which ensures that it never allows the glass to slip downwards over time. To use these shelves the clamps must be mounted at the corners of the glass panels. This clamp is also supplied with the optional anti slip pin which is used when the glass is drilled. These clamps are suitable for loads up to approximately 50kgs per four clamps.

Available in 316 grade satin (brushed) stainless steel.

Description	Material	Finish	Post Type	Code	Unit of Sale
Glass Clamp 67x55mm	316 Stainless Steel	Satin (Brushed)	42mm Diameter	K.GC.6755.316.042.S	Each
Rubber Gasket for 8mm Glass	Rubber	n/a	n/a	K.GC.6755.RUB.08	Set
Rubber Gasket for 10mm Glass	Rubber	n/a	n/a	K.GC.6755.RUB.10	Set
Rubber Gasket for 12mm Glass	Rubber	n/a	n/a	K.GC.6755.RUB.12	Set
Rubber Gasket for 13.5mm Glass	Rubber	n/a	n/a	K.GC.6755.RUB.135	Set
Rubber Gasket for 15mm Glass	Rubber	n/a	n/a	K.GC.6755.RUB.15	Set
Rubber Gasket for 17.5mm Glass	Rubber	n/a	n/a	K.GC.6755.RUB.175	Set

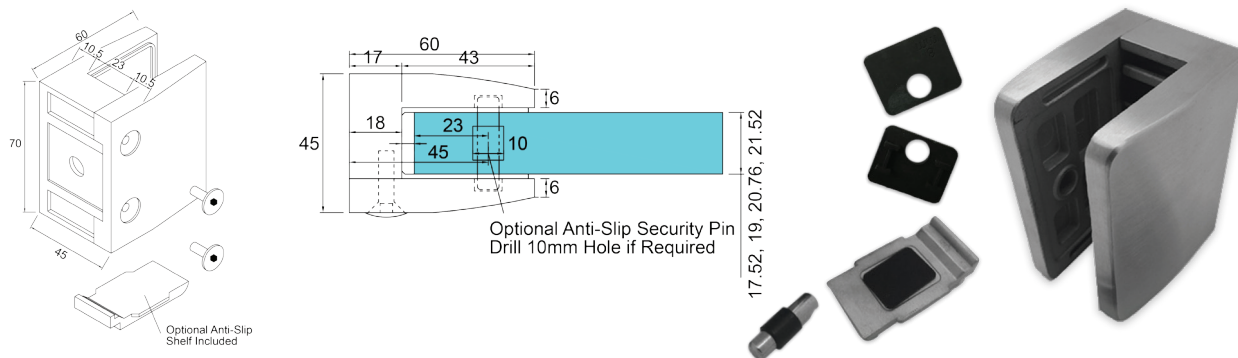


Glass Clamp - 67mm x 55mm - 48mm Post

A 67mm x 55mm rectangular shaped clamp. Suitable for mounting on a 48mm diameter post. Used mainly outdoors for stairs, glass balconies, pharmaceutical plants, food prep areas and any area subject to moisture. Supplied with an optional anti slip safety shelf which ensures that it never allows the glass to slip downwards over time. To use these shelves the clamps must be mounted at the corners of the glass panels. This clamp is also supplied with the optional anti slip pin which is used when the glass is drilled. These clamps are suitable for loads up to approximately 50kgs per four clamps.

Available in 316 grade satin (brushed) stainless steel.

Description	Material	Finish	Post Type	Code	Unit of Sale
Glass Clamp 67x55mm	316 Stainless Steel	Satin (Brushed)	48mm Diameter	K.GC.6755.316.048.S	Each
Rubber Gasket for 8mm Glass	Rubber	n/a	n/a	K.GC.6755.RUB.08	Set
Rubber Gasket for 10mm Glass	Rubber	n/a	n/a	K.GC.6755.RUB.10	Set
Rubber Gasket for 12mm Glass	Rubber	n/a	n/a	K.GC.6755.RUB.12	Set
Rubber Gasket for 13.5mm Glass	Rubber	n/a	n/a	K.GC.6755.RUB.135	Set
Rubber Gasket for 15mm Glass	Rubber	n/a	n/a	K.GC.6755.RUB.15	Set
Rubber Gasket for 17.5mm Glass	Rubber	n/a	n/a	K.GC.6755.RUB.175	Set

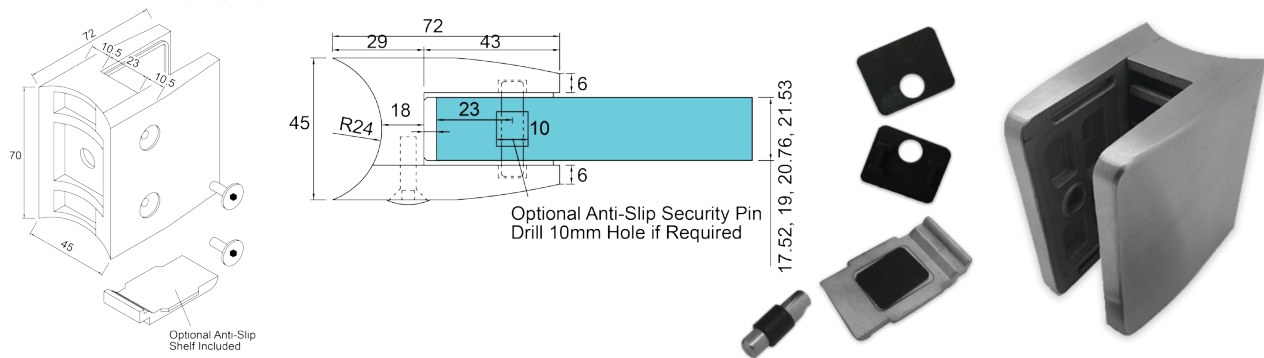


Glass Clamp - 70mm x 60mm - Flat Back

A 70mm x 60mm rectangular shaped clamp. Suitable for mounting on a flat surface. Used mainly for stairs, glass balconies, pharmaceutical plants, food prep areas and any area subject to moisture. Supplied with an optional anti slip safety shelf which ensures that it never allows the glass to slip downwards over time. To use these shelves the clamps must be mounted at the corners of the glass panels. This clamp is also supplied with the optional anti slip pin which is used when the glass is drilled. These clamps are suitable for loads up to approximately 50kgs per four clamps.

Available in 316 grade satin (brushed) stainless steel.

Description	Material	Finish	Post Type	Code	Unit of Sale
Glass Clamp 70x60mm	316 Stainless Steel	Satin (Brushed)	Flat	K.GC.7060.316.000.S	Each
Rubber Gasket for 17.52mm Glass	Rubber	n/a	n/a	K.GC.7060.RUB.175	Set
Rubber Gasket for 19mm Glass	Rubber	n/a	n/a	K.GC.7060.RUB.19	Set
Rubber Gasket for 20.76mm Glass	Rubber	n/a	n/a	K.GC.7060.RUB.207	Set
Rubber Gasket for 21.52mm Glass	Rubber	n/a	n/a	K.GC.7060.RUB.215	Set

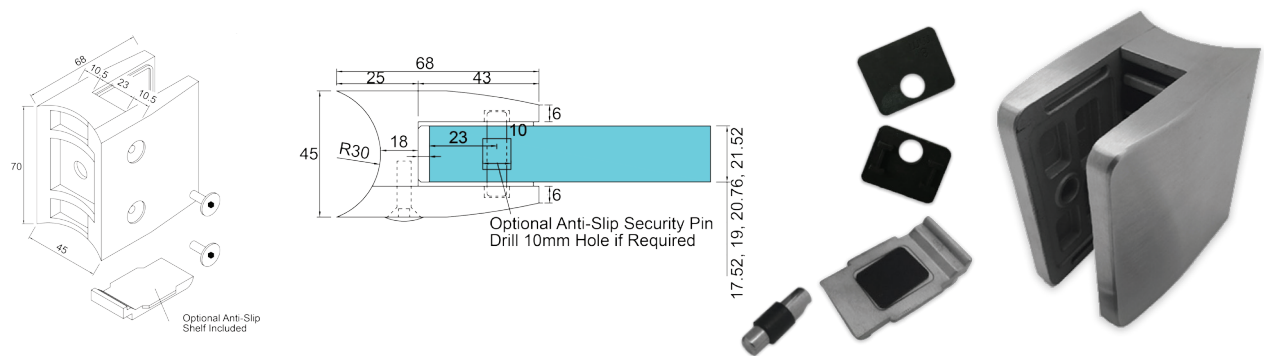


Glass Clamp - 70mm x 60mm - 48mm Post

A 70mm x 60mm rectangular shaped clamp. Suitable for mounting on a 48mm diameter post. Used mainly for stairs, glass balconies, pharmaceutical plants, food prep areas and any area subject to moisture. Supplied with an optional anti slip safety shelf which ensures that it never allows the glass to slip downwards over time. To use these shelves the clamps must be mounted at the corners of the glass panels. This clamp is also supplied with the optional anti slip pin which is used when the glass is drilled. These clamps are suitable for loads up to approximately 50kgs per four clamps.

Available in 316 grade satin (brushed) stainless steel.

Description	Material	Finish	Post Type	Code	Unit of Sale
Glass Clamp 70x60mm	316 Stainless Steel	Satin (Brushed)	48mm Diameter	K.GC.7060.316.048.S	Each
Rubber Gasket for 17.52mm Glass	Rubber	n/a	n/a	K.GC.7060.RUB.175	Set
Rubber Gasket for 19mm Glass	Rubber	n/a	n/a	K.GC.7060.RUB.19	Set
Rubber Gasket for 20.76mm Glass	Rubber	n/a	n/a	K.GC.7060.RUB.207	Set
Rubber Gasket for 21.52mm Glass	Rubber	n/a	n/a	K.GC.7060.RUB.215	Set

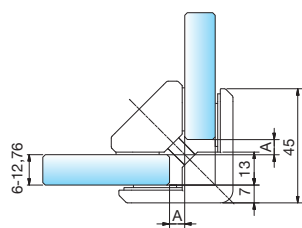


Glass Clamp - 70mm x 60mm - 60mm Post

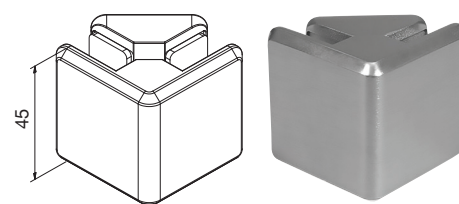
A 70mm x 60mm rectangular shaped clamp. Suitable for mounting on a 60mm diameter post. Used mainly for stairs, glass balconies, pharmaceutical plants, food prep areas and any area subject to moisture. Supplied with an optional anti slip safety shelf which ensures that it never allows the glass to slip downwards over time. To use these shelves the clamps must be mounted at the corners of the glass panels. This clamp is also supplied with the optional anti slip pin which is used when the glass is drilled. These clamps are suitable for loads up to approximately 50kgs per four clamps.

Available in 316 grade satin (brushed) stainless steel.

Description	Material	Finish	Post Type	Code	Unit of Sale
Glass Clamp 70x60mm	316 Stainless Steel	Satin (Brushed)	60mm Diameter	K.GC.7060.316.060.S	Each
Rubber Gasket for 17.52mm Glass	Rubber	n/a	n/a	K.GC.7060.RUB.175	Set
Rubber Gasket for 19mm Glass	Rubber	n/a	n/a	K.GC.7060.RUB.19	Set
Rubber Gasket for 20.76mm Glass	Rubber	n/a	n/a	K.GC.7060.RUB.207	Set
Rubber Gasket for 21.52mm Glass	Rubber	n/a	n/a	K.GC.7060.RUB.215	Set



Glass Thickness	A
9.52mm - 12.76mm	5mm
7.52mm - 8.76mm	6mm
6.00mm - 6.76mm	8mm

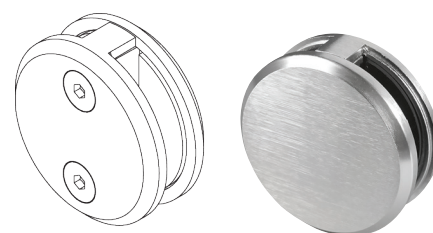
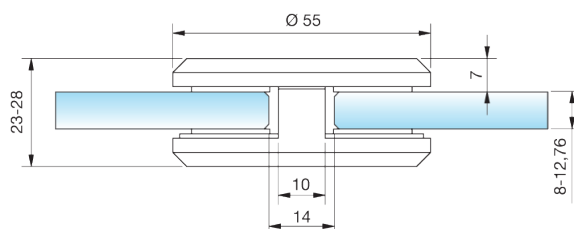


Aluminium Glass Panel Connector Corner Clamp

Suitable for 6 - 12.76mm thick glass. Zinc Diecast in a satin stainless steel finish. Ideal for bracing corner glass panels together for extra strength on 90 degree corners.

Suitable for internal and external use. Brushed stainless steel effect.

Description	Code	Unit of Sale
Aluminium Glass Panel Connector Corner Clamp - Stainless Steel Effect	K104830ZN22-K	Each



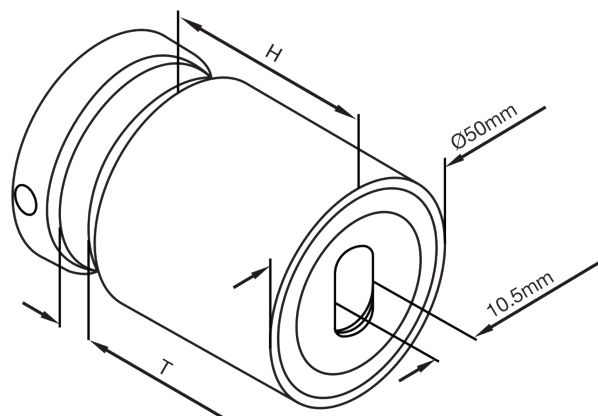
Aluminium Glass Panel Connector

Suitable for 8 - 12.76mm thick glass. Zinc Diecast in a satin stainless steel finish. Ideal for bracing glass panels together to get them in line. Suitable for internal and external use.

Description	Code	Unit of Sale
Aluminium Glass Panel Connector with Stainless Steel Finish (K)	K104868ZN22	Each



Point Fixtures



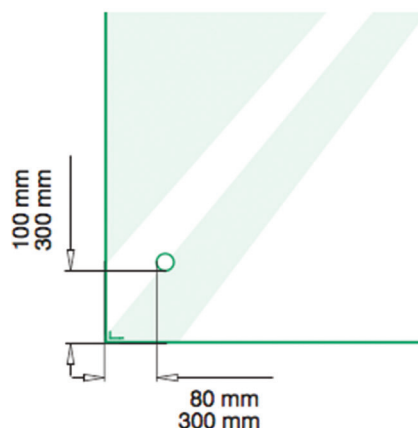
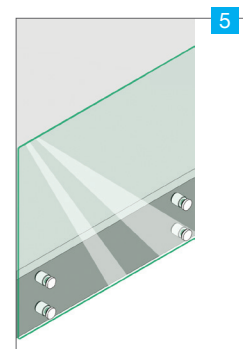
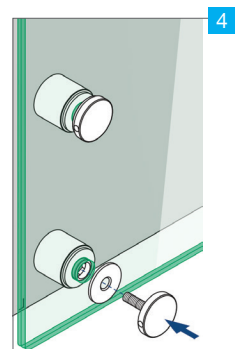
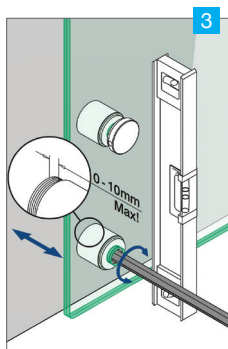
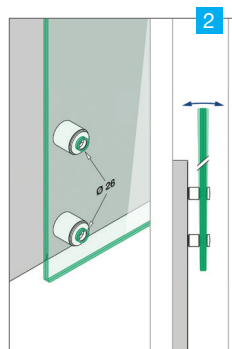
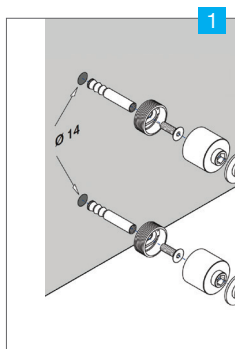
Adjustable Point Fixture - 30mm to 50mm

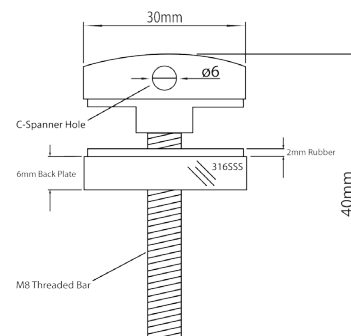
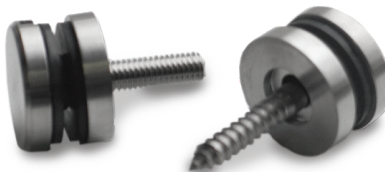
Stainless steel point fixture suitable for mounting glass panels both vertically and horizontally. Supplied at heights of 30mm, 40mm and 50mm.

Available in 304 and 316 Brushed Stainless Steel.

Description	H	T	Code	Unit of Sale
Adjustable Point Fixture - 304SS	30mm	12-25.52mm	K17154.304.30	Each
Adjustable Point Fixture - 304SS	40mm	8-25.52mm	K17154.304.40	Each
Adjustable Point Fixture - 304SS	50mm	8-25.52mm	K17154.304.50	Each
Adjustable Point Fixture - 316SS	30mm	12-25.52mm	K17154.316.30	Each
Adjustable Point Fixture - 316SS	40mm	8-25.52mm	K17154.316.40	Each
Adjustable Point Fixture - 316SS	50mm	8-25.52mm	K17154.316.50	Each

H - Standoff Height T - Glass Thickness

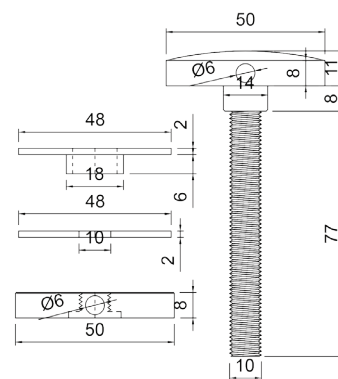




30mm Point Fixture - M8 x 40mm Bolt

Stainless steel point fixture suitable for mounting glass panels both vertically and horizontally. Supplied as standard with an 40mm long threaded bar. Drill 16mm diameter hole in the glass. Optional extra M8 wood fixings at various lengths available also.

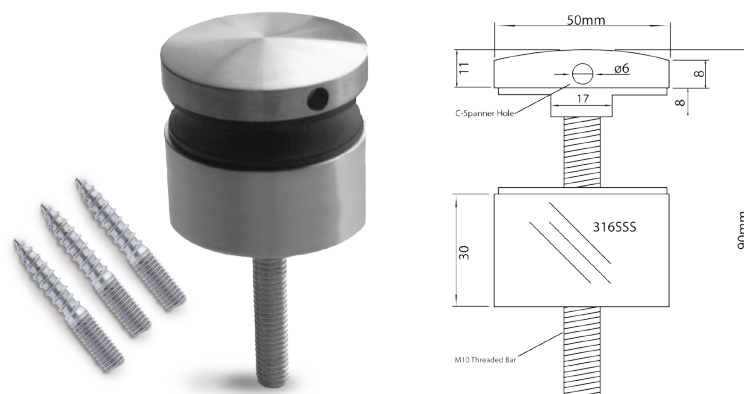
Description	Code	Unit of Sale
30mm Point Fixture - M8x40mm Bolt - Satin Finish 316SSS	K105865116	Each
Hanger Bolt M8 x 50mm	K10586508	Each
Hanger Bolt M8 x 60mm	K10586509	Each
Hanger Bolt M8 x 80mm	K10586510	Each
Tool for Inserting Hanger Bolt M8	K99905001	Each



50mm Point Fixture - M10 x 90mm Bolt

Stainless steel point fixture suitable for mounting glass panels both vertically and horizontally. Supplied as standard with a 90mm long threaded bar. Drill 20mm diameter hole in the glass. These fixings have been tested up to a 3kn line load in certain combinations and glass thicknesses. Test reports available on request. Optional extra M10 wood fixings at various lengths also available.

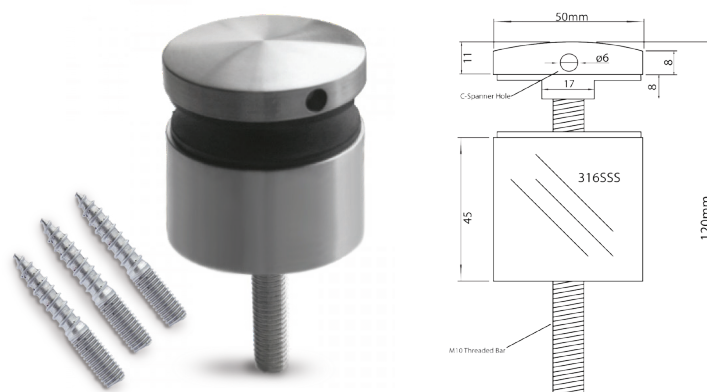
Description	Code	Unit of Sale
50mm Point Fixture - M10x90mm Bolt - 304 SSS	K17154512	Each
50mm Point Fixture - M10x90mm Bolt - 316 SSS	K171545126	Each
Double Side Hanger Bolt - Wood Screw M10 x 80mm	K17154509	Each
Double Side Hanger Bolt - Wood Screw M10 x 100mm	K17154510	Each
Double Side Hanger Bolt - Wood Screw M10 x 120mm	K17154511	Each



50mm Point Fixture with 30mm Standoff

Stainless steel point fixture suitable for mounting glass panels both vertically and horizontally. Supplied as standard with an 90mm long threaded bar. Drill 20mm diameter hole in the glass. Optional extra M10 wood fixings at various lengths available also.

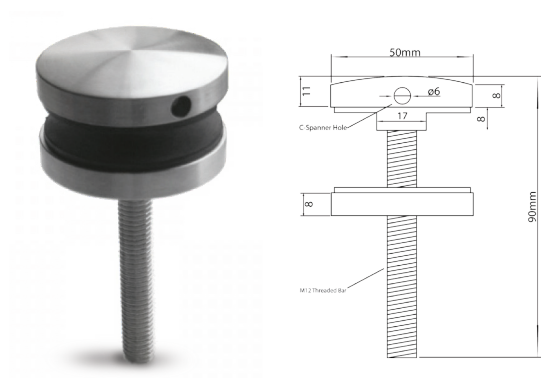
Description	Code	Unit of Sale
50mm Point Fixture with 30mm Standoff 316SSS	K171545306	Each
Double Side Hanger Bolt - Wood Screw M10 x 80mm	K17154509	Each
Double Side Hanger Bolt - Wood Screw M10 x 100mm	K17154510	Each
Double Side Hanger Bolt - Wood Screw M10 x 120mm	K17154511	Each



50mm Point Fixture with 45mm Standoff

Stainless steel point fixture suitable for mounting glass panels both vertically and horizontally. Supplied as standard with an 120mm long threaded bar. Drill 20mm diameter hole in the glass. Optional extra M10 wood fixings at various lengths available also.

Description	Code	Unit of Sale
50mm Point Fixture with 45mm Standoff 316SSS	K171545456	Each
Double Side Hanger Bolt - Wood Screw M10 x 80mm	K17154509	Each
Double Side Hanger Bolt - Wood Screw M10 x 100mm	K17154510	Each
Double Side Hanger Bolt - Wood Screw M10 x 120mm	K17154511	Each



50mm Point Fixture - M12 x 90mm Bolt

Stainless steel point fixture suitable for mounting glass panels both vertically and horizontally. Supplied as standard with a 90mm long threaded bar. Drill 22mm diameter hole in the glass. These fixings have been tested up to a '3kn line load in certain combinations and glass thickness'. Test reports available on request.

Description	Code	Unit of Sale
50mm Point Fixture - M12 x 90mm Bolt - 316SSS	K171545126A	Each



Dual Purpose C-Spanner for 50mm Fixings

Dual purpose C-Spanner used for tightening and loosening 50mm fixings.

Description	Code	Unit of Sale
Dual Purpose C-Spanner for 50mm Fixings	K99902431A	Each



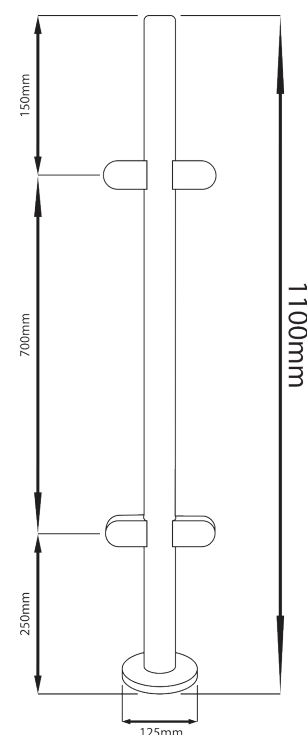
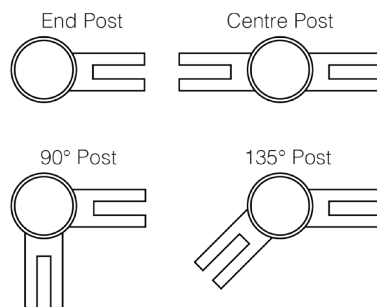
Tool for Inserting Hanger Bolt M10

The tool is placed in a drill to insert a hanger bolt into pre-drilled wood, wooden perches or other projects. This tool makes inserting hanger bolts fast and effortless.

Description	Code	Unit of Sale
Tool for Inserting Hanger Bolt M10	K99905002	Each



Pre Manufactured Stainless Steel
Balustrade Posts



Balustrade Post - 1100mm - Flat Cap

Our glass balustrade posts are manufactured to the highest quality and in 316 grade stainless steel. The main post is welded to the mounting base and has a 2.6mm thick wall for extra strength.

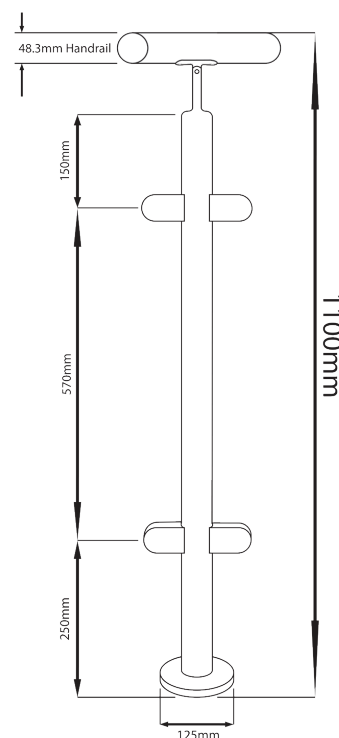
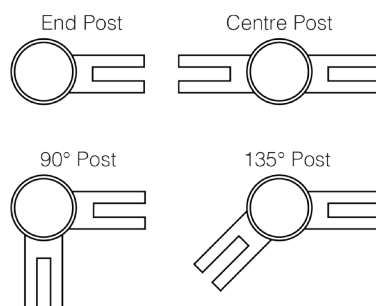
Supplied in a fine 320 grit satin stainless steel finish which allows for easy care and maintenance. Manufactured as standard at 1100mm high and in four different configurations. Other angles, clamp positions and heights are available on request as all the posts are manufactured and fabricated in house.

Description

Code

Unit of Sale

End Balustrade Post - 1100mm - Flat Cap	KSS.PRE.1100.FC.END.SS	Each
90 Degree Balustrade Post - 1100mm - Flat Cap	KSS.PRE.1100.FC.90.SS	Each
135 Degree Balustrade Post - 1100mm - Flat Cap	KSS.PRE.1100.FC.135.SS	Each
Centre Balustrade Post - 1100mm - Flat Cap	KSS.PRE.1100.FC.CENTRE.SS	Each



Balustrade Post - 1100mm - Hand Rail Type

Our glass balustrade posts are manufactured to the highest quality and in 316 grade stainless steel. The main post is welded to the mounting base and has a 2.6mm thick wall for extra strength.

The standard handrail bracket is for 48.3mm diameter tube but this can be changed on request. Designed to finish at 1100mm high with the handrail installed.

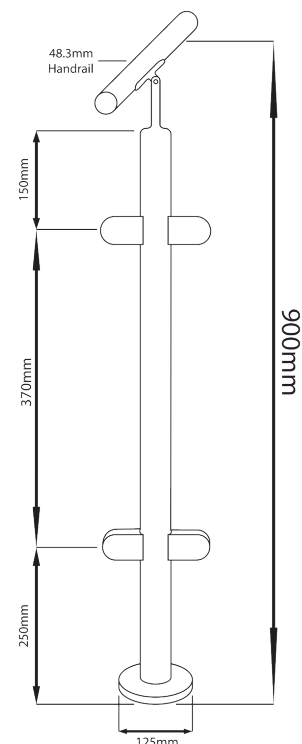
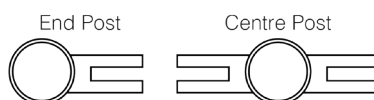
Manufactured as standard to finish at 1100mm high with a handrail and in four different configurations. Other angles, clamp positions and heights are available on request as all the posts are manufactured and fabricated in house.

Description

Code

Unit of Sale

End Balustrade Post - 1100mm - Hand Rail	KSS.PRE.1100.HR.END.SS	Each
90 Degree Balustrade Post - 1100mm - Hand Rail	KSS.PRE.1100.HR.90.SS	Each
135 Degree Balustrade Post - 1100mm - Hand Rail	KSS.PRE.1100.HR.135.SS	Each
Centre Balustrade Post - 1100mm - Hand Rail	KSS.PRE.1100.HR.CENTRE.SS	Each



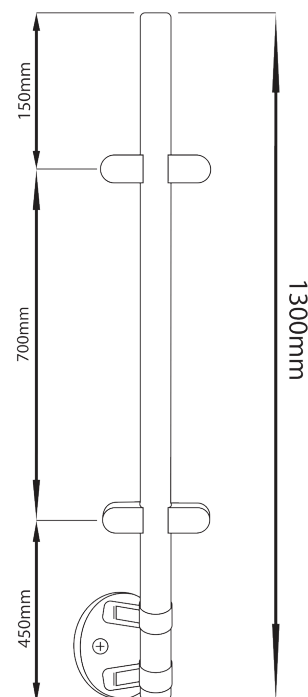
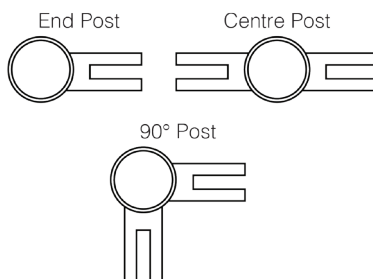
Balustrade Post - 900mm - Sloped Hand Rail

Our glass balustrade posts are manufactured to the highest quality and in 316 grade stainless steel. The main post is welded to the mounting base and has a 2.6mm thick wall for extra strength.

The standard handrail bracket is for 48.3mm diameter tube but this can be changed on request. Designed to finish at 900mm high with the handrail installed.

Manufactured as standard to finish at 900mm with a handrail and in two configurations. Other angles, clamp positions and heights are available on request as all the posts are manufactured and fabricated in house.

Description	Code	Unit of Sale
Centre Balustrade Post - 900mm - Sloped Hand Rail - Ext	KSS.PRE.900.SHR.CENTRE.SS	Each
End Balustrade Post - 900mm - Sloped Hand Rail - Ext	KSS.PRE.900.SHR.END.SS	Each



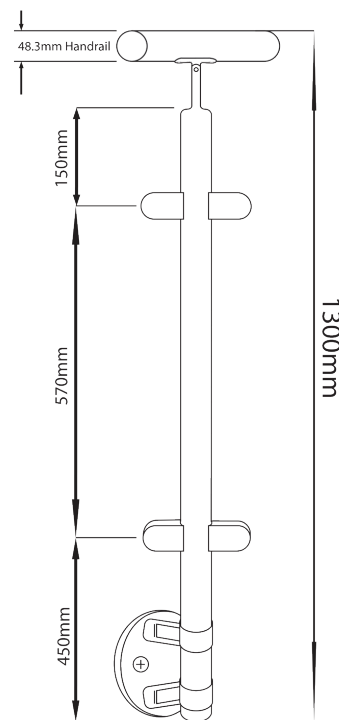
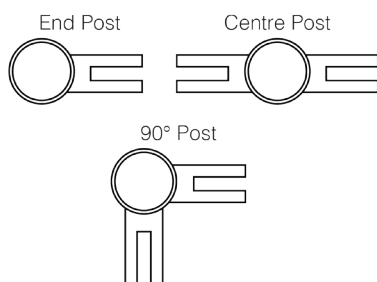
Side Mount Post - 900 to 1300mm - Flat Cap

Our glass balustrade posts are manufactured using 2.6mm thick wall stainless steel for additional strength. The main post is welded to the mounting base and has a 2.6mm thick wall for extra strength.

Supplied in a fine 320 grit satin stainless steel finish which allows for easy care and maintenance.

Three clamp configurations available as standard designed to finish 1100mm above floor level. Other angles and clamp positions are available on request as all the posts are manufactured in house.

Description	Code	Unit of Sale
Side Mount End Post - 900-1300mm - Flat Cap - Ext	KSS.PRESI.1300.FC.END.SS	Each
Side Mount Corner Post - 900-1300mm - Flat Cap - Ext	KSS.PRESI.1300.FC.90.SS	Each
Side Mount Centre Post - 900-1300mm - Flat Cap - Ext	KSS.PRESI.1300.FC.CENTRE.SS	Each



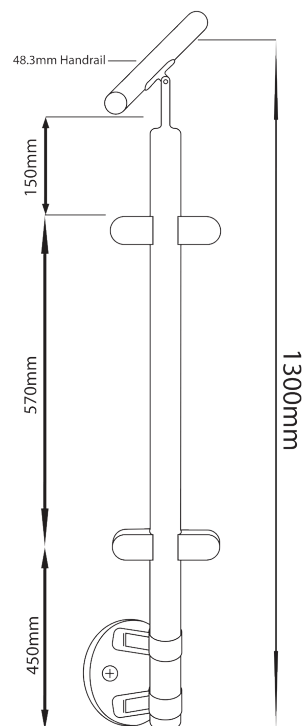
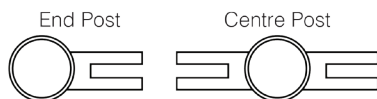
Side Mount Post - 900 to 1300mm - Hand Rail

Our glass balustrade posts are manufactured to the highest quality and in 316 grade stainless steel. The main post is welded to the mounting base and has a 2.6mm thick wall for extra strength.

The standard handrail bracket is for 48.3mm diameter tube but this can be changed on request. Designed to finish at 1300mm high with the handrail installed.

Three clamp configurations available as standard designed to finish 1100mm above floor level. Other angles and clamp positions are available on request as all the posts are manufactured in house.

Description	Code	Unit of Sale
Side Mount End Post - 900-1300mm - Hand Rail - Ext	KSS.PRESI.1300.HR.END.SS	Each
Side Mount Corner Post - 900-1300mm - Hand Rail - Ext	KSS.PRESI.1300.HR.90.SS	Each
Side Mount Centre Post - 900-1300mm - Hand Rail - Ext	KSS.PRESI.1300.HR.CENTRE.SS	Each



Side Mount Post - 900 to 1300mm - Sloped Hand Rail

Our glass balustrade posts are manufactured to the highest quality and in 316 grade stainless steel. The main post is welded to the mounting base and has a 2.6mm thick wall for extra strength.

The standard handrail bracket is for 48.3mm diameter tube but this can be changed on request. Designed to finish at 1300mm high with the handrail installed.

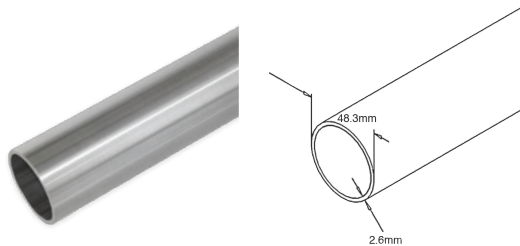
Two clamp configurations available as standard designed to finish 1100mm above floor level. Other angles and clamp positions are available on request as all the posts are manufactured in house.

Description	Code	Unit of Sale
Side Mount Centre Post - 900-1300mm - Sloped Hand Rail - Ext	KSS.PRESI.1300.SHR.CENTRE.SS	Each
Side Mount End Post - 900-1300mm - Sloped Hand Rail - Ext	KSS.PRESI.1300.SHR.END.SS	Each



Eazi-Rail SS

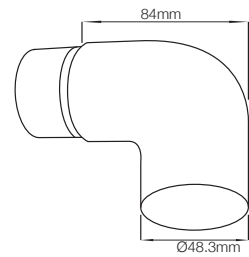
Modular Stainless Steel Glass
Balustrade Components



Railing Tube 48.3mm x 2.6mm in 316

48.3mm diameter with a 2.6mm thick wall, 316 grade stainless steel tube suitable for balustrade posts and handrail. Finished in a fine 320 grit brushed finish. Can be supplied in 6 metre lengths but this may incur additional transport costs.

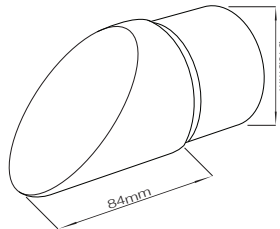
Description	Code	Unit of Sale
Railing Tube	KSS.2004985.316	3 Metre



End Scroll for tube 48.3mm x 2.6mm

A preformed end scroll supplied in 316 grade stainless steel and a 320 grit fine brushed polish. Simply mounted to the handrail by means of the stainless steel adhesive. No polishing or welding needed. (For tube 48.3mm x 2.6mm).

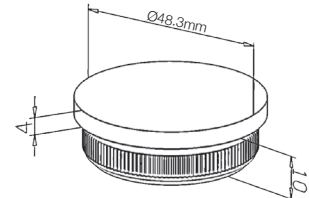
Description	Code	Unit of Sale
End Scroll	KSS.0103.486.316	Each



End Cap 45° for tube 48.6mm x 2.6mm

A preformed end scroll supplied in 316 grade stainless steel and a 320 grit fine brushed polish. Simply mounted to the handrail by means of the stainless steel adhesive. No polishing or welding needed. (For tube 48.3mm x 2.6mm).

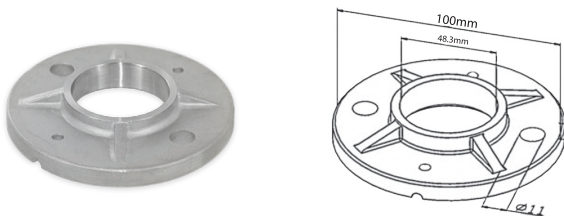
Description	Code	Unit of Sale
End Cap	KSS.0104.486.316	Each



End Cap Quick-Fix flat

A preformed end cap supplied in 316 grade stainless steel and a 320 grit fine brushed polish. Simply mounted to the handrail or post by tapping in with a soft faced mallet or hammer. No polishing or welding needed. (For tube 48.3mm x 2.6mm).

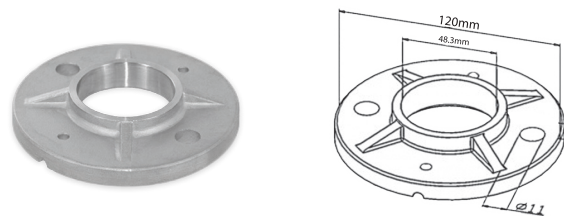
Description	Code	Unit of Sale
End Cap Quick-Fix flat	KSS.0121.486.316	Each



100mm Floor Flange

316 Grade stainless steel floor mounting flange suitable for welding to 48.3mm diameter stainless steel tube. Pre drilled with two holes. (For tube 48.3mm x 2.6mm).

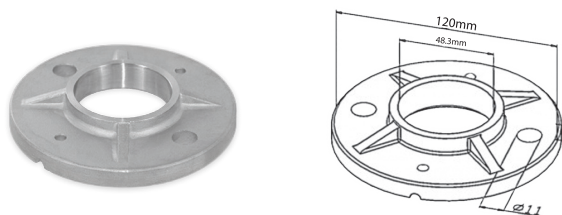
Description	Code	Unit of Sale
100mm Floor Flange	KSS.0180.486.316	Each



120mm Floor Flange

316 Grade stainless steel floor mounting flange suitable for welding to 48.3mm diameter stainless steel tube. Pre drilled with two holes. (For tube 48.3mm x 2.6mm).

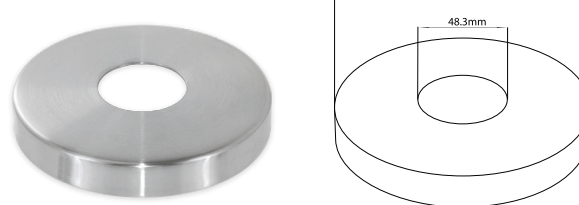
Description	Code	Unit of Sale
120mm Floor Flange	KSS.0181.486.316	Each



120mm Floor Flange with Levelling Screws

316 Grade stainless steel floor mounting flange suitable for welding to 48.3mm diameter stainless steel tube. Pre drilled with two holes and three levelling points. (For tube 48.3mm x 2.6mm).

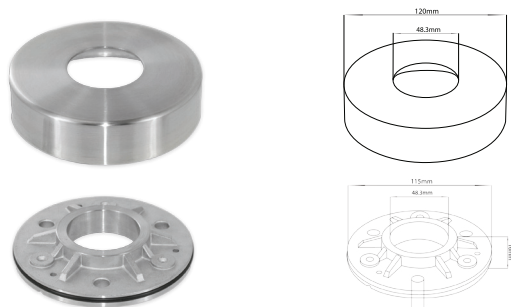
Description	Code	Unit of Sale
120mm Floor Flange with screws	KSS.0171.486.316	Each



125mm Floor Flange Cover

125mm diameter cover to suit 48.3mm diameter post. (For tube 48.3mm x 2.6mm).

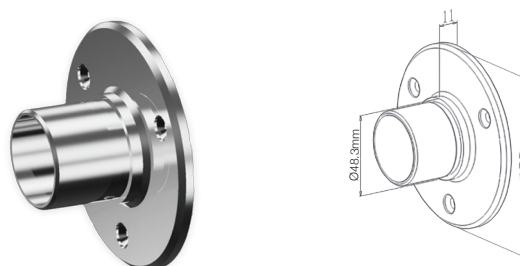
Description	Code	Unit of Sale
125mm Floor Flange Cover	KSS.0187.486.316	Each



115mm Floor Flange & 120mm Cover

120mm diameter cover to suit 48.3mm diameter post. (For tube 48.3mm x 2.6mm). 316 Grade stainless steel floor mounting flange suitable for welding to 48.3mm diameter stainless steel tube. Pre drilled with three holes. Supplied with O ring to prevent movement of the flange cover. (For tube 48.3mm x 2.6mm).

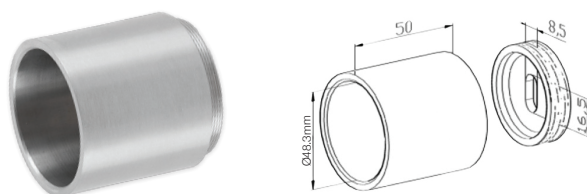
Description	Code	Unit of Sale
120mm Floor Flange Cover	KSS.0185.486.316	Each
115mm Floor Flange with O ring	KSS.0182.486.316	Each



Handrail To Wall Bracket

Suitable for mounting the standard 48.3mm diameter handrail to a wall. Supplied in 320 grit polished satin stainless steel. Pre drilled for wall fixing. (For tube 48.3mm x 2.6mm).

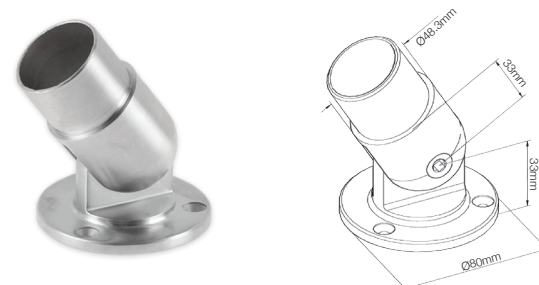
Description	Code	Unit of Sale
Handrail To Wall Bracket	KSS.0184.486.316	Each



Handrail to Wall Bracket

Suitable for mounting the standard 48.3mm diameter handrail to a wall. Supplied in 320 grit polished satin stainless steel. Pre drilled for wall fixing. Ideal for a hidden fixing assembly. (For tube 48.3mm x 2.6mm).

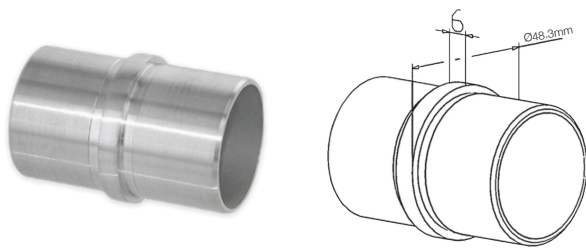
Description	Code	Unit of Sale
Handrail to Wall Bracket	KSS.0192.483.316	Each



Adjustable Wall To Handrail Bracket

Suitable for mounting the standard 48.3mm diameter handrail to a wall. Supplied in 320 grit polished satin stainless steel. Pre drilled for wall fixing. Ideal for use on sloping balustrades such as ramps or stairs. (For tube 48.3mm x 2.6mm).

Description	Code	Unit of Sale
Adjustable Wall To Handrail Bracket	KSS.0193.483.316	Each



Connector for tube 48.3mm x 2.6mm

A preformed handrail joiner supplied in 316 grade stainless steel and a 320 grit fine brushed polish. Simply mounted to the handrail by means of the stainless steel adhesive. No polishing or welding needed. (For tube 48.3mm x 2.6mm).

Description	Code	Unit of Sale
Connector	KSS.0201.486.316	Each



135° Connector

A preformed 135° tube connector supplied in 316 grade stainless steel and a 320 grit fine brushed polish. Simply mounted to the handrail or post by means of the stainless steel adhesive. No polishing or welding needed. (For tube 48.3mm x 2.6mm).

Description	Code	Unit of Sale
135° Connector	KSS.0202.486.316	Each



90° Connector

A preformed 90° tube connector supplied in 316 grade stainless steel and a 320 grit fine brushed polish. Simply mounted to the handrail or post by means of the stainless steel adhesive. No polishing or welding needed. (For tube 48.3mm x 2.6mm).

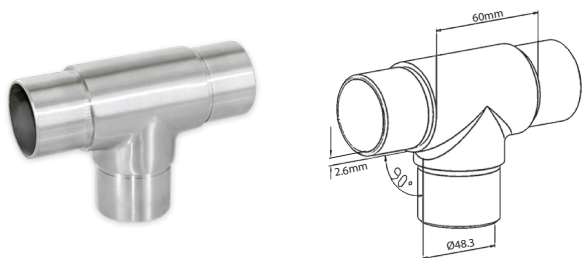
Description	Code	Unit of Sale
90° Connector	KSS.0203.486.316	Each



90° Handrail To Post Connector

A preformed 90° tube connector with a post connector, supplied in 316 grade stainless steel and a 320 grit fine brushed polish. Simply mounted to the handrail or post by means of the stainless steel adhesive. No polishing or welding needed. (For tube 48.3mm x 2.6mm).

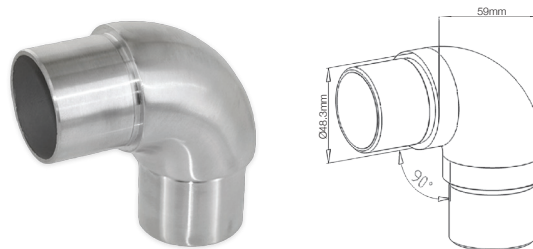
Description	Code	Unit of Sale
90° Handrail To Post Connector	KSS.0204.486.316	Each



T Connector

A preformed T shape tube connector, supplied in 316 grade stainless steel and a 320 grit fine brushed polish. Simply mounted to the handrail or post by means of the stainless steel adhesive. No polishing or welding needed. (For tube 48.3mm x 2.6mm).

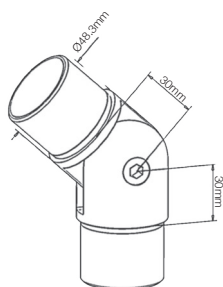
Description	Code	Unit of Sale
T Connector	KSS.0206.486.316	Each



90° Curved connector

A preformed 90° tube connector supplied in 316 grade stainless steel and a 320 grit fine brushed polish. Simply mounted to the handrail or post by means of the stainless steel adhesive. No polishing or welding needed. (For tube 48.3mm x 2.6mm).

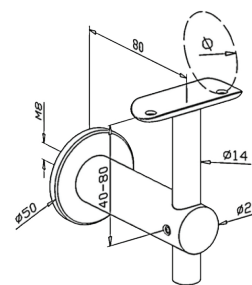
Description	Code	Unit of Sale
90° Curved Connector	KSS.0207.486.316	Each



Adjustable Handrail Connector

A preformed variable angle tube connector supplied in 316 grade stainless steel and a 320 grit fine brushed polish. Simply mounted to the handrail or post by means of the stainless steel adhesive. No polishing or welding needed. (For tube 48.3mm x 2.6mm).

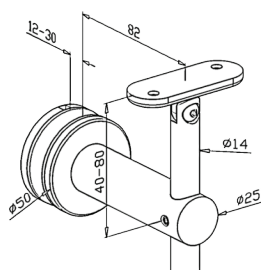
Description	Code	Unit of Sale
Adjustable Handrail Connector	KSS.0221.486.316	Each



Adjustable Wall to Handrail Bracket & Saddle

48mm adjustable 316 grade stainless steel secret fixing wall to handrail brackets. Suitable for 12 - 30mm thick glass. (For tube 48.3mm x 2.6mm).

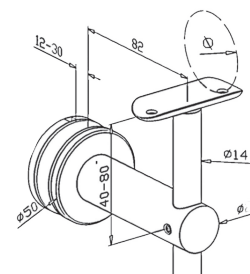
Description	Code	Unit of Sale
Wall to Handrail Bracket	KSS.0305.480.316	Each
Handrail Saddle	KSS.3301.000.316	Each



Adjustable Glass to Handrail Bracket - Flat

Flat adjustable 316 grade stainless steel glass to handrail brackets. For mounting a handrail with a flat surface. Suitable for 12 - 30mm thick glass.

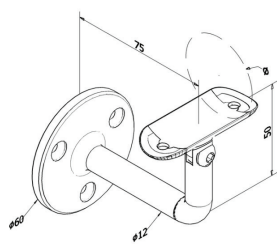
Description	Code	Unit of Sale
Glass to Handrail Bracket	KSS.0306.000.316	Each



Adjustable Glass to Handrail Bracket & Saddle

48mm adjustable 316 grade stainless steel glass to handrail brackets. Suitable for 12 - 30mm thick glass. Comes standard to suit a 48.3mm handrail. A separate saddle can be bought for mounting handrails with a flat surface.

Description	Code	Unit of Sale
Glass to Handrail Bracket	KSS.0306.480.316	Each
Handrail Saddle	KSS.3301.000.316	Each



Wall to Handrail Bracket

316 grade stainless steel wall to handrail brackets. Suitable for 12 - 30mm thick glass. (For tube 48.3mm x 2.6mm).

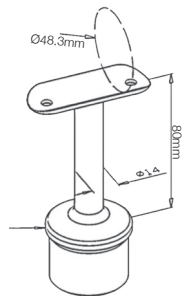
Description	Code	Unit of Sale
Wall to Handrail Bracket	KSS.0426.483.316	Each



Stainless Steel Glue - 50ml

A high viscosity stainless steel adhesive ideal for easily installing any of the Eazi-rail modular components.

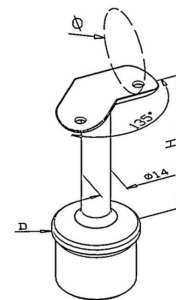
Description	Code	Unit of Sale
Stainless Steel Glue	KSS.GLUE	50ml



180° Handrail Bracket

A preformed 180° handrail bracket supplied in 316 grade stainless steel and a 320 grit fine brushed polish. Simply mounted to the post by means of the stainless steel adhesive and self tapping screws to the handrail. No polishing or welding needed. Suitable for use with a 48.3mm diameter post and handrail.

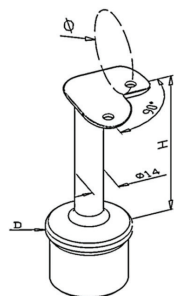
Description	Code	Unit of Sale
180° Handrail Bracket	KSS.0345.480.316	Each



135° Handrail Bracket

A preformed 135° handrail bracket supplied in 316 grade stainless steel and a 320 grit fine brushed polish. Simply mounted to the post by means of the stainless steel adhesive and self tapping screws to the handrail. No polishing or welding needed. Suitable for use with a 48.3mm diameter post and handrail. (D = 48.3mm, H = 80mm)

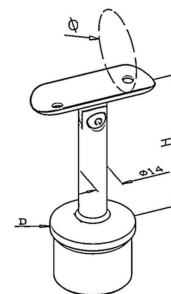
Description	Code	Unit of Sale
135° Handrail Bracket	KSS.0345.485.316	Each



90° Handrail Bracket

A preformed 90° handrail bracket supplied in 316 grade stainless steel and a 320 grit fine brushed polish. Simply mounted to the post by means of the stainless steel adhesive and self tapping screws to the handrail. No polishing or welding needed. Suitable for use with a 48.3mm diameter post and handrail. (D = 48.3mm, H = 80mm)

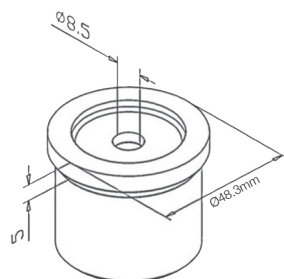
Description	Code	Unit of Sale
90° Handrail Bracket	KSS.0345.489.316	Each



Adjustable Handrail Bracket

A pre formed 180° handrail variable angle bracket supplied in 316 grade stainless steel and a 320 grit fine brushed polish. Simply mounted to the post by means of the stainless steel adhesive and self tapping screws to the handrail. No polishing or welding needed. Suitable for use with a 48.3mm diameter post and handrail. Ideal for use on stairs or ramps. (D = 48.3mm, H = 80mm)

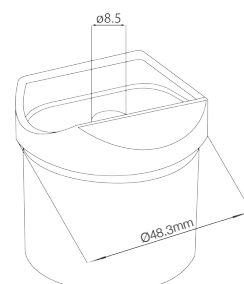
Description	Code	Unit of Sale
Adjustable Handrail Bracket	KSS.0445.480.316	Each



Adapter - Flat

A preformed tube connector supplied in 316 grade stainless steel and a 320 grit fine brushed polish. Simply mounted on one side by means of a bolt and the other by stainless steel adhesive. No polishing or welding needed. (For tube 48.3mm x 2.6mm).

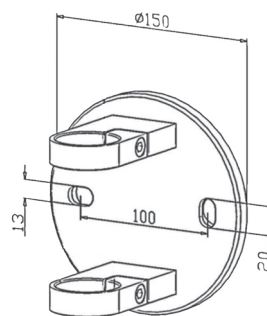
Description	Code	Unit of Sale
Adapter-flat	KSS.0501.486.316	Each



Adapter - 48.3mm

A preformed tube connector supplied in 316 grade stainless steel and a 320 grit fine brushed polish. Simply mounted on one side by means of a bolt and the other by stainless steel adhesive. No polishing or welding needed. (For tube 48.3mm x 2.6mm).

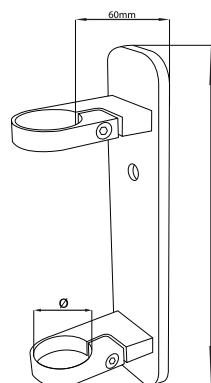
Description	Code	Unit of Sale
Adapter-48.3mm	KSS.0506.483.316	Each



Side Fix Baluster Bracket for tube 48.3mm (Round)

A pre assembled side mount baluster bracket supplied in 316 grade stainless steel and a 320 grit fine brushed polish. Simply mounted to the substructure and the post is clamped by means of an allen key fixing. No polishing or welding needed.

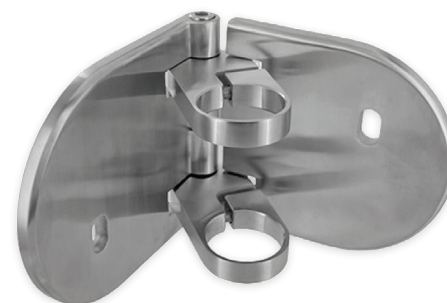
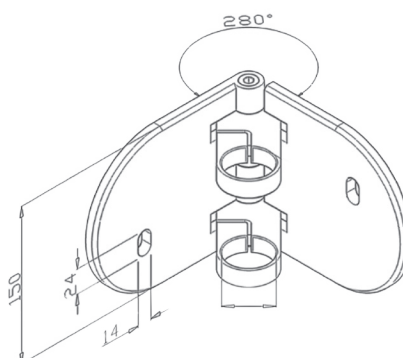
Description	Code	Unit of Sale
Side Fix Baluster Bracket for tube 48.3mm, brushed K320	KSS.0522.483.316	Each



Side Fix Baluster Bracket for tube 48.3mm (Rectangular)

A pre assembled side mount baluster bracket supplied in 316 grade stainless steel and a 320 grit fine brushed polish. Simply mounted to the substructure and the post is clamped by means of an allen key fixing. No polishing or welding needed. Overall height is 300mm and the post stands off the structure by 60mm.

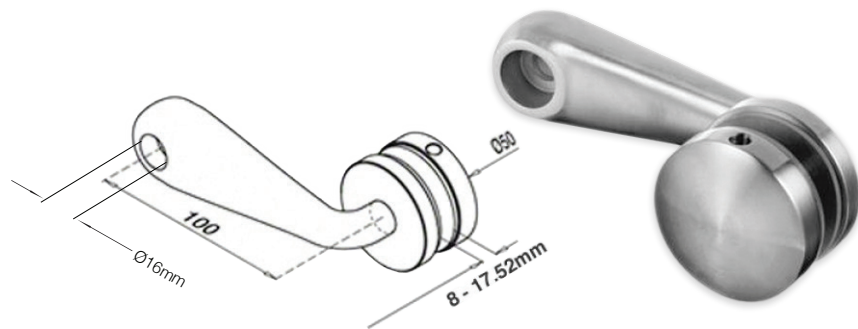
Description	Code	Unit of Sale
Side Fix Baluster Bracket for tube 48.3mm, brushed K320	KSS.0524.483.316	Each



Side Fix Baluster Bracket variable for tube fitting 48.3mm

A pre assembled side mount baluster bracket supplied in 316 grade stainless steel and a 320 grit fine brushed polish. Simply mounted to the substructure and the post is clamped by means of an allen key fixing. No polishing or welding needed.

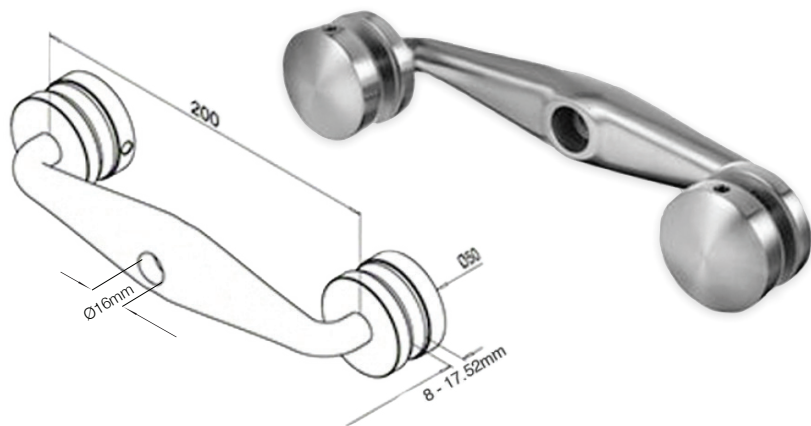
Description	Code	Unit of Sale
Side Fix Baluster Bracket variable for tube fitting 48.3mm, 3 B45	KSS.0528.483.316	Each



Glass Balustrade Spider Bracket - Single Arm - 8mm to 17.52mm

A Spider type bracket for use in balustrading. 100mm long single arm for use on an end or angled post. Supplied as standard to mount onto a 48.3mm diameter post but alternative mounts can be purchased to suit flat surfaces, 42.4mm and 60.3mm diameter posts. Suitable for use with 8mm to 17.52mm toughened glass or toughened/laminated safety glass.

Description	Code	Unit of Sale
Glass Balustrade Spider Bracket - Single Arm - 8-17.52mm	KSS.0100.480.316	Each
Balustrade Spider Bracket Flat Tube Mount Adapter	KSS.0100.000.316	Each
Balustrade Spider Bracket 42.4mm Tube Mount Adapter	KSS.0100.424.316	Each
Balustrade Spider Bracket 60.3mm Tube Mount Adapter	KSS.0100.603.316	Each

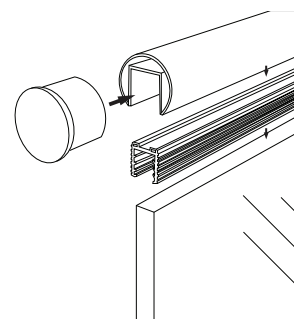
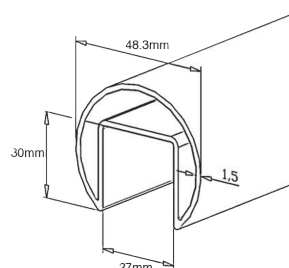


Glass Balustrade Spider Bracket - Double Arm - 8mm to 17.52mm

A Spider type bracket for use in balustrading. 200mm long double arm for use on a centre post. Supplied as standard to mount onto a 48.3mm diameter post but alternative mounts can be purchased to suit flat surfaces, 43.3mm and 60.3mm diameter posts. Suitable for use with 8mm to 17.52mm toughened glass or toughened/laminated safety glass.

Description	Code	Unit of Sale
Glass Balustrade Spider Bracket - Double Arm - 8-17.52mm	KSS.0101.480.316	Each
Balustrade Spider Bracket Flat Tube Mount Adapter	KSS.0100.000.316	Each
Balustrade Spider Bracket 42.4mm Tube Mount Adapter	KSS.0100.424.316	Each
Balustrade Spider Bracket 60.3mm Tube Mount Adapter	KSS.0100.603.316	Each

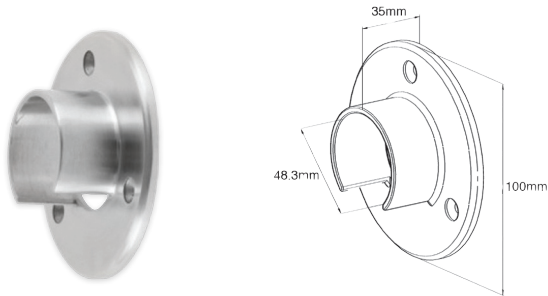
Slotted Stainless Steel Handrail



Slotted Stainless Steel Handrail 48.3mm x 27mm x 30mm x 1.5mm

316 grade slotted stainless steel tube finished in a fine 320 grit brushed finish.
Suitable for 8mm - 21.5mm thick glass, depending on the gasket selected.
Can be supplied in six metre lengths but this may incur additional transport costs.

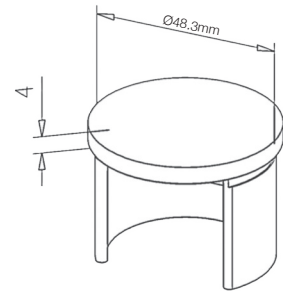
Description	Code	Unit of Sale
Slotted Tube 48.3x27x30x1.5mm in 316, Satin K320	KSS.2004981.316	3 Metre
Slotted Handrail Gasket for 8- 11mm Thick Glass	KSS.6770.483.0800	Metre
Slotted Handrail Gasket for 11.5-13.5mm Thick Glass	KSS.6770.483.1150	Metre
Slotted Handrail Gasket for 15-17.5mm Thick Glass	KSS.6770.483.1600	Metre
Slotted Handrail Gasket for 19-21.5mm Thick Glass	KSS.6770.483.2000	Metre



Slotted Handrail to Wall Bracket

A pre formed wall to slotted handrail tube connector supplied in 316 grade stainless steel and a 320 grit fine brushed polish. Simply mounted to the handrail by means of the stainless steel adhesive. No polishing or welding needed. (For tube 48.3mm x 1.5mm).

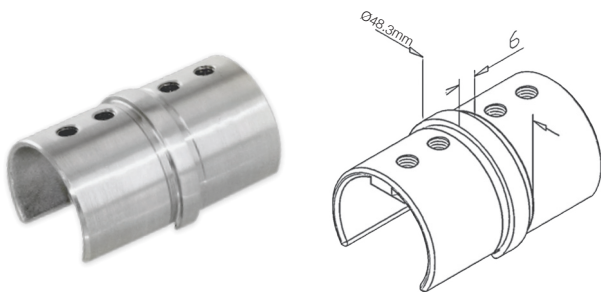
Description	Code	Unit of Sale
Handrail to Wall Bracket	KSS.1183.486.316	Each



Slotted Handrail End Cap

A pre formed end cap supplied in 316 grade stainless steel and a 320 grit fine brushed polish. Simply mounted by using the stainless steel adhesive. No polishing or welding needed. (For tube 48.3mm x 1.5mm).

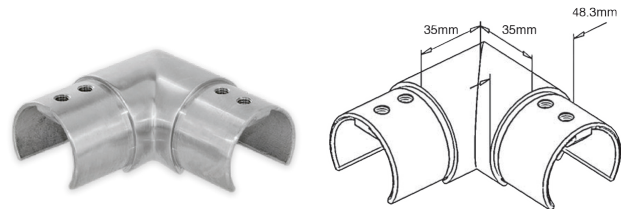
Description	Code	Unit of Sale
End Cap	KSS.1112.486.316	Each



Slotted Handrail Joiner

A pre formed slotted tube joiner supplied in 316 grade stainless steel and a 320 grit fine brushed polish. Simply mounted by means of the stainless steel adhesive. No polishing or welding needed. (For tube 48.3mm x 1.5mm).

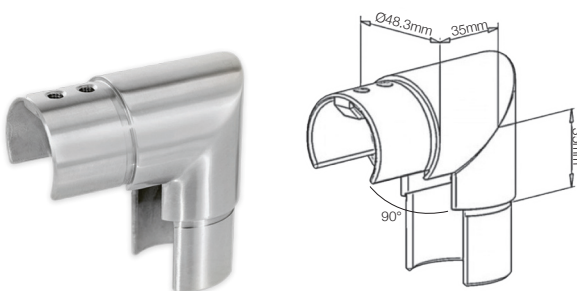
Description	Code	Unit of Sale
Handrail Joiner	KSS.1201.485.316	Each



Slotted Handrail 90° Connector

A pre formed slotted tube 90° joiner supplied in 316 grade stainless steel and a 320 grit fine brushed polish. Simply mounted by means of the stainless steel adhesive. No polishing or welding needed. (For tube 48.3mm x 1.5mm).

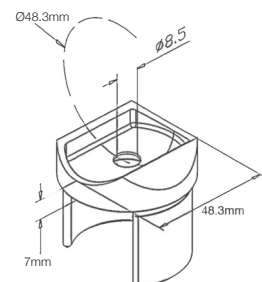
Description	Code	Unit of Sale
90° Connector	KSS.1202.485.316	Each



Slotted Handrail 90° Vertical Connector

A pre formed slotted tube 90° joiner supplied in 316 grade stainless steel and a 320 grit fine brushed polish. Simply mounted by means of the stainless steel adhesive. No polishing or welding needed. (For tube 48.3mm x 1.5mm).

Description	Code	Unit of Sale
90° Vertical Connector	KSS.1203.485.316	Each

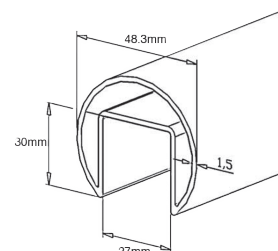
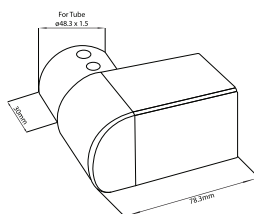


Slotted Handrail To 48.3mm Tube Adapter

A pre formed slotted handrail to tube connector, supplied in 316 grade stainless steel and a 320 grit fine brushed polish. Simply mounted to the post by means of a bolt and mounted to the slotted handrail by means of the stainless steel adhesive. No polishing or welding needed. (For tube 48.3mm x 1.5mm).

Description	Code	Unit of Sale
Tube Adapter	KSS.1503.483.316	Each

Juliette Balcony Systems



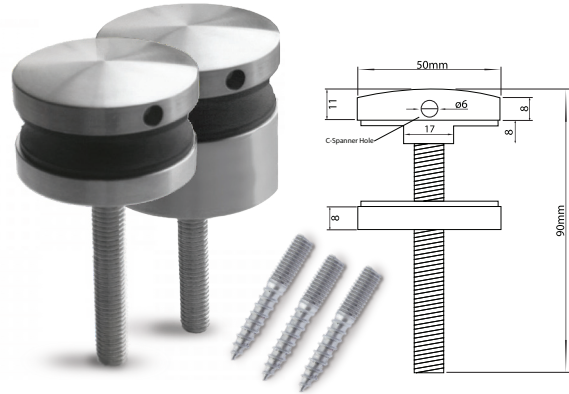
Slotted Rail Juliette Balcony System

Available in a 320 grit brushed finish 316 grade stainless steel making this ideal for use outdoors in even the toughest environments. Manufactured to work with our standard 48.3mm slotted handrail system. These brackets allow you to easily install a minimalist, yet robust, balcony system on openings up to 1800mm wide. Suitable for numerous glass thicknesses, depending on the application and the same brackets can be mounted in a vertical arrangement, as well as the standard horizontal one, which would mean no handrail would be seen from inside the building.

Used generally for large patio doors that open inwards or large inward opening windows where a fall hazard may arise.

Description	Code	Unit of Sale
Juliette Balcony Bracket for Slotted Rail - Left	KSS.6507.480.316	Metre
Juliette Balcony Bracket for Slotted Rail - Right	KSS.6508.480.316	Metre
Slotted Tube 48.3x27x30x1.5mm in 316, Satin K320	KSS.2004981.316	3 Metre
Slotted Handrail Gasket for 8- 11mm Thick Glass	KSS.6770.483.0800	Metre
Slotted Handrail Gasket for 11.5-13.5mm Thick Glass	KSS.6770.483.1150	Metre
Slotted Handrail Gasket for 15-17.5mm Thick Glass	KSS.6770.483.1600	Metre
Slotted Handrail Gasket for 19-21.5mm Thick Glass	KSS.6770.483.2000	Metre

More
information
on pages
52 - 56



Point Fixed Juliette Balcony System

Stainless steel point fixtures suitable for mounting glass panels both vertically and horizontally. Supplied as standard with a 90mm long threaded bar. These fixings have been tested up to a '3kn line load in certain combinations and glass thickness'. Test reports available on request.

Optional extra M10 wood fixings at various lengths also available.

Description	Code	Unit of Sale
50mm Point Fixture M10 x 90 Bolt - 304SSS	K17154512	Each
50mm Point Fixture M10 x 90 Bolt - 316SSS	K171545126	Each
50mm Point Fixture M12 x 90 Bolt - 316SSS	K171545126A	Each
50mm Point Fixture with 30mm Standoff 316SSS	K171545306	Each
50mm Point Fixture with 45mm Standoff 316SSS	K171545456	Each
Double Side Hanger Bolt - Wood Screw M10 x 80mm	K17154509	Each
Double Side Hanger Bolt - Wood Screw M10 x 100mm	K17154510	Each
Double Side Hanger Bolt - Wood Screw M10 x 120mm	K17154511	Each
Tool for Inserting Hanger Bolt M10	K99905002	Each
Dual Purpose C-Spanner for 38mm & 50mm Fixings	K99902431A	Each



Glass Gate Systems



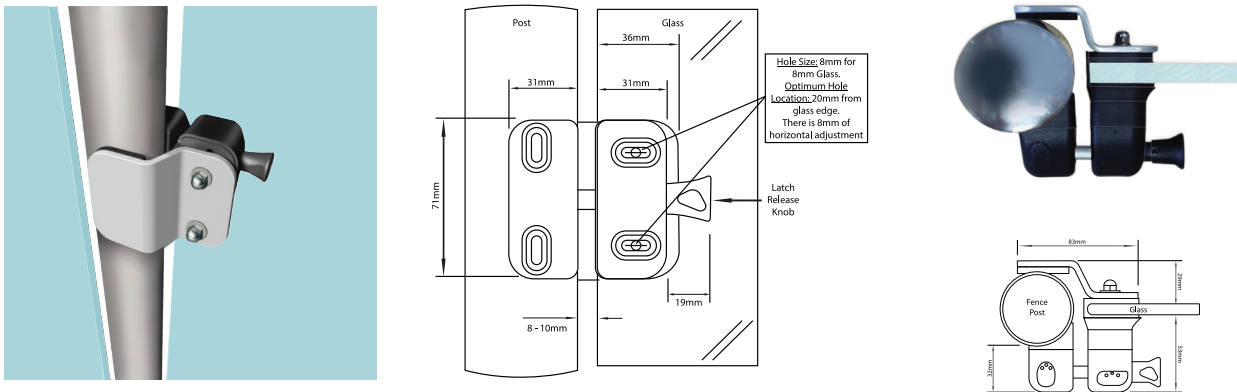


Glass Gate Hinge - 8mm/10mm Thick Glass - 25kg Max

The Vizage Glass Gate Hinge marks a new era in stylish, architectural-quality gate hinges. No longer do gate fabricators need to hassle with cumbersome conventional hinges to meet the special needs of today's round-posted fences and glass gates. With Vizage, everything is supplied in one convenient kit to mount directly to gates. The only requirements for using Vizage hinges are glass panels of either 8mm or 10mm thickness, and round fence posts of 50mm diameter. The hinge is made of tough, engineering polymers, and the covers are finished with zirconium-protected metal surfacing, all of which guards the hinges against rust, binding, sagging, staining and chipping.

Self-closing adjustment can be made from either end of the hinge.
Each pair of hinges closes glass gates weighing up to 25kg (55lb).

Description	Code	Unit of Sale
Glass Gate Hinge - 8-10mm Thick Glass - 25kg Max	KSS.GATEHINGE.BSS.001	Pair



Glass Gate Magnetic Latch - 8mm/10mm Thick Glass

The MagnaLatch Side Pull Model is an inexpensive, magnetic gate latch that offers simple, effective latching for swimming pool and other glass gates. With a new sleek design, it offers horizontal and vertical adjustment of up to 8mm for quick installation and extends the life of a gate by allowing easy accommodation of gate sagging and movement over time.

The Side Pull Glass Gate Hardware Kit is specifically designed to fit glass pool gates and 50mm round posts. Features: Patented magnetic self-latching quality moulded polymers and stainless steel dress caps to hide screws. Engineered for ease of installation. Won't disengage from shaking and pulling. Magnet is sealed from the elements. Suits left or right handed gates. No mechanical jamming during closure. No rusting, binding or staining. Stylish appearance. Reduced installation time and costs. Can't be forced open. Won't rust or corrode.

Description	Code	Unit of Sale
Glass Gate Magnetic Latch - 8-10mm Thick Glass	KSS.GATELATCH.001	Each



GlassParts
Glass Fittings & Tools for the Trade

Republic of Ireland (Head Office)

Phone: 0505 45125 Fax: 0505 45345
Web: www.glassparts.ie Email: sales@glassparts.ie
Address: Lisbunny Industrial Estate, Lisbunny, Nenagh, Co. Tipperary.

United Kingdom (Sales Office)

Phone: 0800 975 3436 Fax: 00 353 505 45345
Web: www.glassparts.co.uk Email: sales@glassparts.co.uk
Address: Kemp House, 152 City Road, London, EC1V 2NX.